

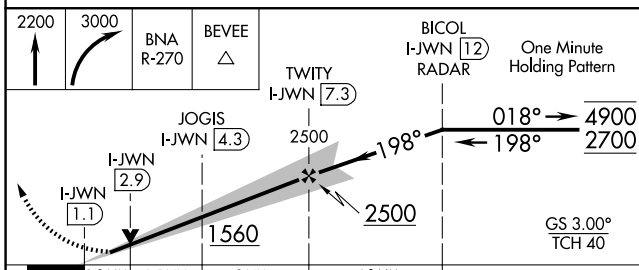
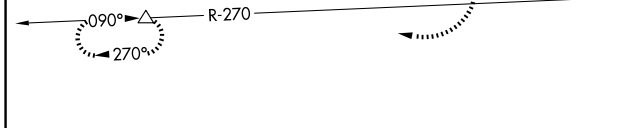
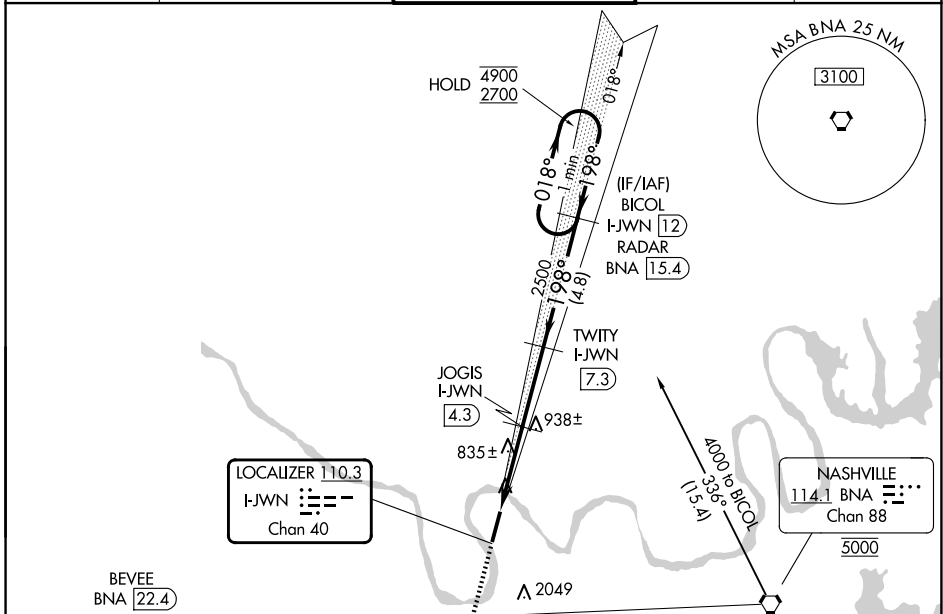
LOC/DME I-JWN 110.3 Chan 40	APP CRS 198°	Rwy Ldg TDZE Apt Elev	6001 501 501
-------------------------------------------------	------------------------	-----------------------------	-----------------------------------------

ILS or LOC RWY 20

JOHN C TUNE (JWN)

DME required.	MISSED APPROACH: Climb to 2200 then climbing right turn to 3000 on BNA VORTAC R-270 to BEVEE/BNA 22.4 DME and hold.
<p>▼ Circling NA east of Rwy 2-20. VDP NA when using Nashville Intl altimeter setting.</p> <p>▲ NA When local altimeter setting not received, use Nashville Intl altimeter setting and increase S-ILS 20 DA to 738 feet, increase all MDAs 40 feet.</p>	

ATIS 127.075	NASHVILLE APP CON 119.35 372.0	JOHN TUNE TOWER ★ 119.45 (CTAF)	GND CON 121.7	UNICOM 122.7
------------------------	------------------------------------------	-------------------------------------------	-------------------------	------------------------



CATEGORY	A	B	C	D
S-ILS 20	701-3/4 200 (200-3/4)			
S-LOC 20	1100-1	599 (600-1)	1100-1 3/4	599 (600-1 3/4)
CIRCLING	1200-1	699 (700-1)	1340-2 1/2 839 (900-2 1/2)	1340-2 3/4 839 (900-2 3/4)

ELEV 501	TDZE 501
198°	20
6001 x 100	TWR
0.7% UP	2

SE-1, 16 APR 2026 to 14 MAY 2026

SE-1, 16 APR 2026 to 14 MAY 2026