

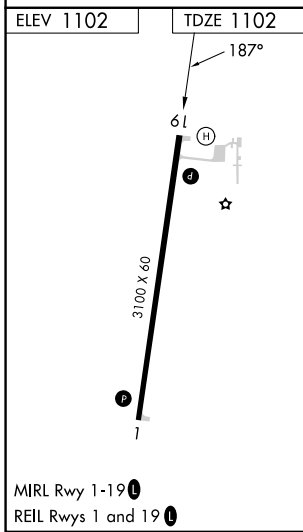
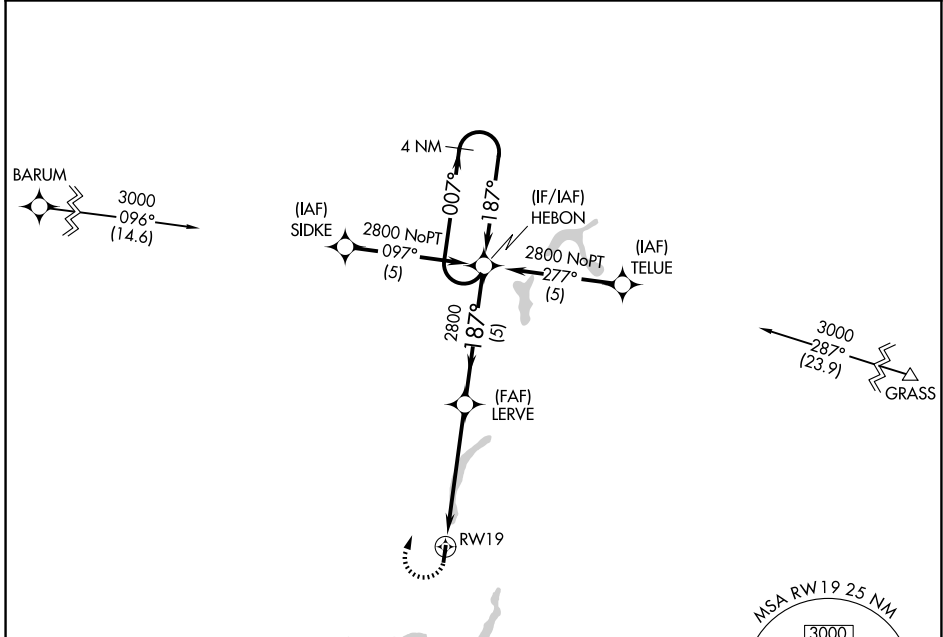
APP CRS	Rwy Ldg	3100
187°	TDZE	1102
	Apt Elev	1102

RNAV (GPS) RWY 19

SOLO SPRINGS MUNI (OLG)

RNP APCH.	MISSED APPROACH: Climbing right turn to 2800 direct HEBON WP and hold.
Straight-in Rwy 19 NA at night, Circling Rwy 19 NA at night. Rwy 19 helicopter visibility reduction below 1 SM NA.	

AWOS-3 119.6	DULUTH APP CON 125.45 233.7	CTAF 122.9 0
------------------------	---------------------------------------	------------------------



ELEV 1102		TDZE 1102	
2800 HEBON		Visual Segment - Obstacles.	
2800 HEBON		4 NM Holding Pattern	
2800 HEBON		LERVE HEBON RWY 19 187° 2800 007° 2800 5.1 NM 5 NM	
CATEGORY	A	B	C
LNAV MDA	1800-1 698 (700-1)	1800-2 698 (700-2)	NA
CIRCLING	1800-1 698 (700-1)	1800-2 698 (700-2)	NA

EC-3, 16 APR 2026 to 14 MAY 2026

EC-3, 16 APR 2026 to 14 MAY 2026