

APP CRS	Rwy Ldg	5000
138°	TDZE	988
	Apt Elev	989

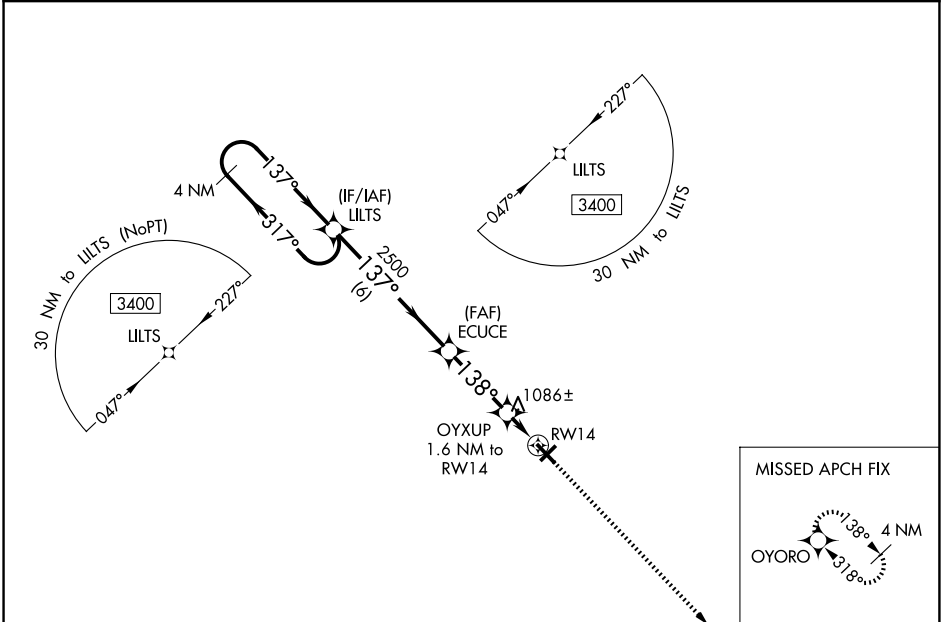
RNAV (GPS) RWY 14

BURNETT COUNTY (RZN)

▼ DME/DME RNP-0.3 NA. VDP NA with Rush City, MN altimeter setting.
▲ When local altimeter setting not received, use Rush City, MN altimeter setting and increase all MDA 80 feet; increase LNAV Cat C/D visibility and Circling Cat C/D visibility ¼ mile. Helicopter visibility reduction below ¾ SM NA. Night landing: Rwy 5, 23, 32 NA.

MISSED APPROACH:
 Climb to 3400 direct OYORO and hold.

AWOS-3 118.325	MINNEAPOLIS CENTER 121.05 235.775	UNICOM 122.8 (CTAF)
---------------------------------	--	--------------------------------------



EC-3, 16 APR 2026 to 14 MAY 2026

EC-3, 16 APR 2026 to 14 MAY 2026

	ELEV 989		TDZE 988	
4 NM Holding Pattern	VGSI and descent angles not coincident (VGSI Angle 3.00/TCH 28).			
3400 ← 317°	LILTS	ECUCE	OYUP	OYORO
137° →	1.37°	3.00° TCH 40	1.6 NM to RWY 14	
		2500	1.38°	
		1520	1 NM to RWY 14	
	6 NM	3 NM	0.6 NM	1 NM
CATEGORY	A	B	C	D
LNAV MDA	1340-1 352 (400-1)			
CIRCLING	1440-1	451 (500-1)	1540-1½ 551 (600-1½)	1680-2¼ 691 (700-2¼)

