

APP CRS	Rwy Ldg	3900
046°	TDZE	989
	Apt Elev	989

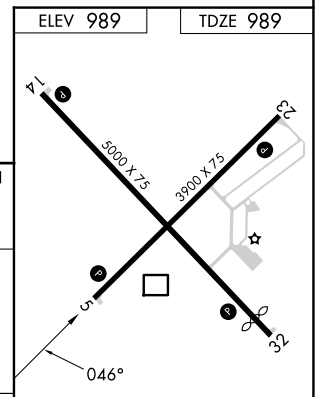
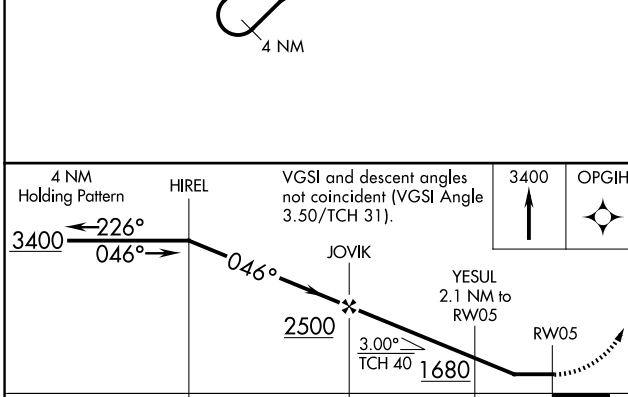
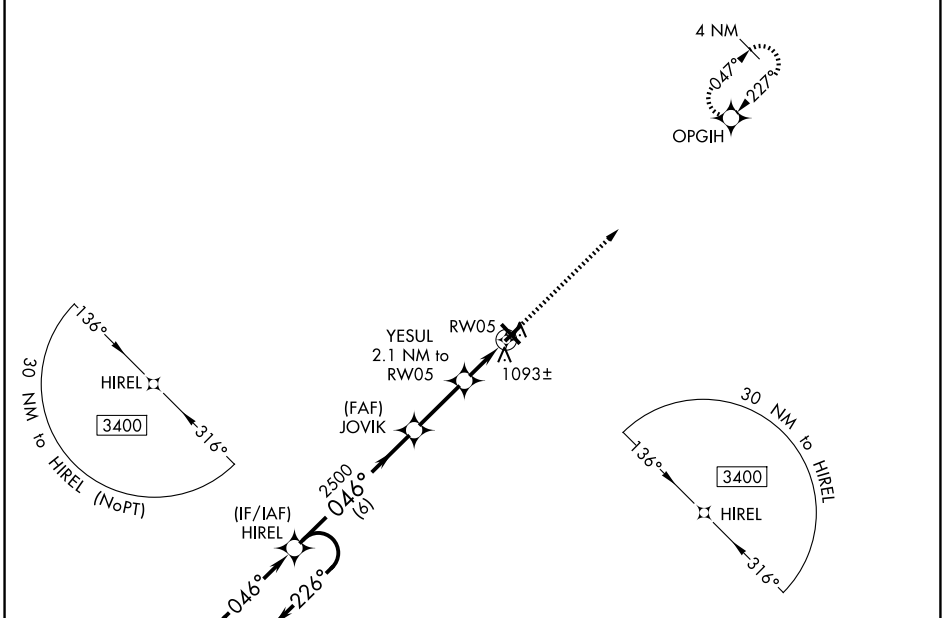
RNAV (GPS) RWY 5

BURNETT COUNTY (RZN)

⚠ DME/DME RNP-0.3 NA. Helicopter visibility reduction below 1 SM NA.
⚠ Night Landing: Rwy 5, 23, 32 NA. When local altimeter setting not received, use Rush City, MN altimeter setting and increase all MDA 80 feet; increase LNAV Cat C/D visibility 3/8 mile, and Circling Cat C/D visibility 1/4 mile.

MISSED APPROACH: Climb to 3400 direct OPGIH and hold.

AWOS-3 118.325	MINNEAPOLIS CENTER 121.05 235.775	UNICOM 122.8 (CTAF) 📶
--------------------------	---	--



CATEGORY	A	B	C	D
LNAV MDA	1360-1 371 (400-1)			
CIRCLING	1440-1	451 (500-1)	1540-1½ 551 (600-1½)	1680-2¼ 691 (700-2¼)

ELEV 989 TDZE 989

REIL Rws 5, 14, 23 and 32 **📶**
 MRL Rws 5-23 and 14-32 **📶**

EC-3, 16 APR 2026 to 14 MAY 2026

EC-3, 16 APR 2026 to 14 MAY 2026