

WAAS CH 58107 W13A	APP CRS 129°	Rwy Idg TDZE 1005 Apt Elev 1008	5000
--	------------------------	---	-------------

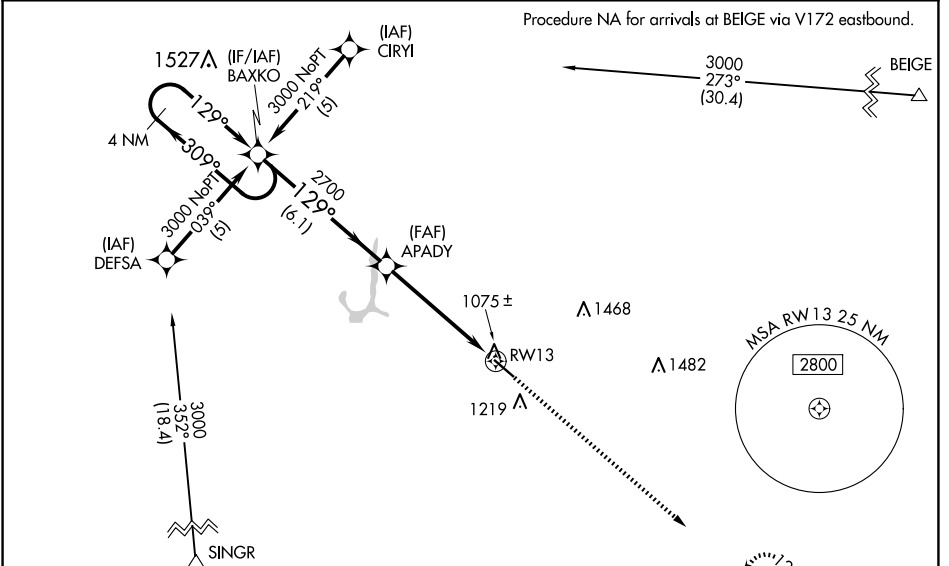
RNAV (GPS) RWY 13

GRINNELL RGNL (GGI)

⚠ When local altimeter setting not received, use Newton altimeter setting and increase all DAs 38 feet and all MDAs 40 feet, increase LPV and LNAV/VNAV visibility ¼ mile all Cats and LNAV Cat C visibility ¼ mile. Baro-VNAV NA when using Newton altimeter setting. For uncompensated Baro-VNAV systems, LNAV/VNAV NA below -17°C (2°F) or above 54°C (130°F). Visibility reduction by helicopters NA. DME/DME RNP-0.3 NA.

MISSED APPROACH: Climb to 3000 direct PICRA and hold.

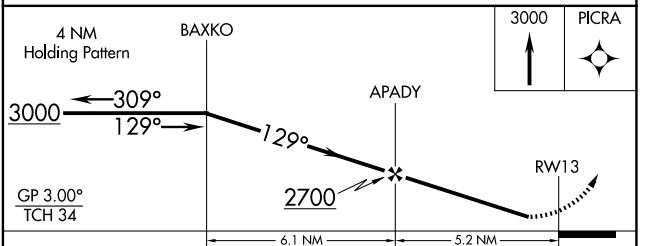
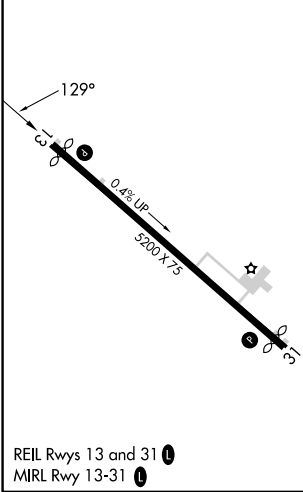
AWOS-3 120.725	CHICAGO CENTER 127.05 282.35	UNICOM 122.8 (CTAF) 0
--------------------------	--	---------------------------------



NC-3, 16 APR 2026 to 14 MAY 2026

NC-3, 16 APR 2026 to 14 MAY 2026

ELEV 1008	TDZE 1005
-----------	-----------



CATEGORY	A	B	C	D
LPV DA	1284-1 279 (300-1)			NA
LNAV/VNAV DA	1415-1½ 410 (500-1½)			NA
LNAV MDA	1480-1	475 (500-1)	1480-1¼ 475 (500-1¼)	NA
CIRCLING	1620-1	612 (700-1)	1620-1¾ 612 (700-1¾)	NA