

(BEAVY6.BEAVY) 26022

AL-6894 (FAA)

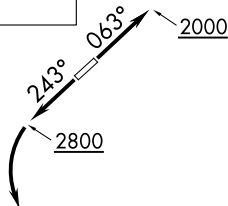
LINCOLN COUNTY RGNL (IPJ)  
LINCOLNTON, NORTH CAROLINA

# BEAVY SIX DEPARTURE (RNAV)

CHARLOTTE DEP CON  
134.75 257.2  
AWOS-3  
119.675  
CLNC DEL (GCO)  
124.9  
UNICOM (CTAF)  
123.05

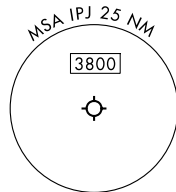
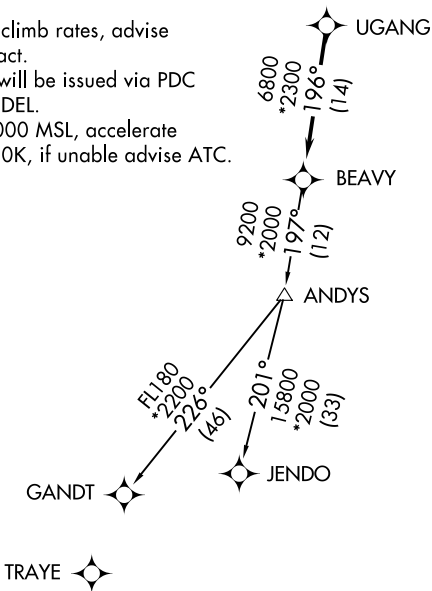
RNAV 1-DME/DME/IRU or GPS.  
RADAR required.

**TOP ALTITUDE:  
3000**



TAKEOFF MINIMUMS  
Rwys 5, 23: Standard.

- NOTE: For turbo jets only.
- NOTE: If unable to accept climb rates, advise ATC on initial contact.
- NOTE: Transponder code will be issued via PDC or Charlotte CLNC DEL.
- NOTE: Upon reaching 10000 MSL, accelerate to and maintain 280K, if unable advise ATC.



NOTE: Chart not to scale.

## DEPARTURE ROUTE DESCRIPTION

TAKEOFF RUNWAY 5: Climb on heading 063° to 2000 before proceeding on course, then on heading assigned by ATC, thence. . . .

TAKEOFF RUNWAY 23: Climb on heading 243° to 2800 before turning left, then on heading assigned by ATC, thence. . . .

. . . .on RADAR vectors to UGANG, then on track 196° to BEAVY. Then on assigned transition. Maintain 3000, expect clearance to filed altitude within 10 minutes after departure.

GANDT TRANSITION (BEAVY6.GANDT)

JENDO TRANSITION (BEAVY6.JENDO)

BEAVY SIX DEPARTURE (RNAV)

(BEAVY6.BEAVY) 21MAR24

LINCOLNTON, NORTH CAROLINA  
LINCOLN COUNTY RGNL (IPJ)

SE-2, 16 APR 2026 to 14 MAY 2026

SE-2, 16 APR 2026 to 14 MAY 2026