

LOC/DME I-IPJ 111.15 Chan 48(Y)	APP CRS 233°	Rwy Ldg TDZE Apt Elev	5501 872 878
--	------------------------	-----------------------------	---

ILS Y or LOC Y RWY 23

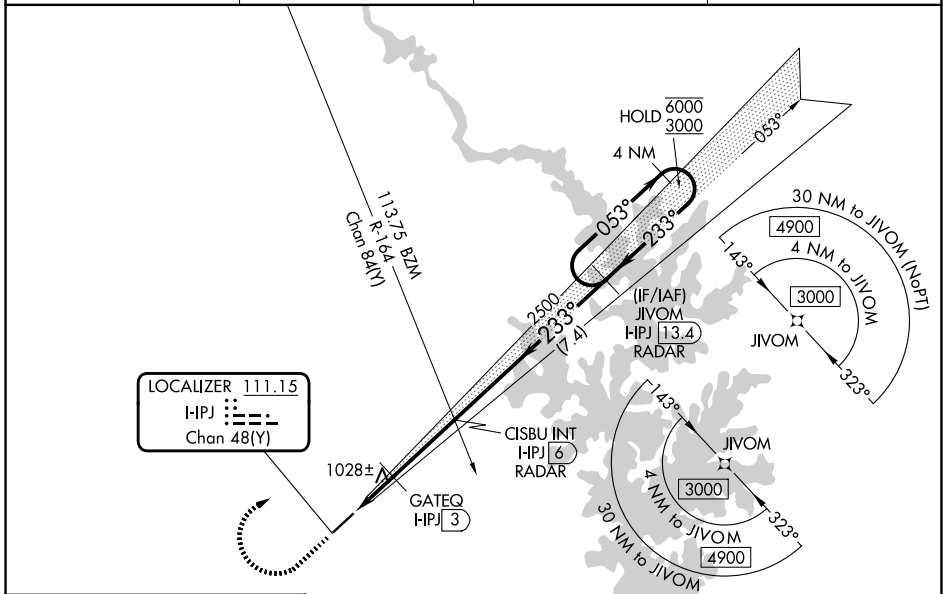
LINCOLN COUNTY RGNL (IPJ)

RNP APCH - GPS.

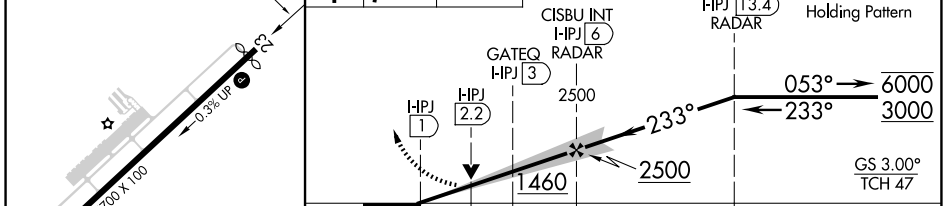
⚠ VDP NA when using CLT altimeter setting. Rwy 23 helicopter visibility reduction below $\frac{3}{4}$ SM NA. When local altimeter setting not received, use CLT altimeter setting: increase S-ILS 23 DA to 1213 feet and visibilities $\frac{1}{8}$ SM; increase all MDAs 80 feet and S-LOC 23 visibility Cats C/D $\frac{1}{8}$ SM and Circling visibility Cats C/D $\frac{1}{4}$ SM; increase GATEQ Fix Minimums S-LOC visibility Cats C/D and Circling visibility Cats C/D $\frac{1}{4}$ SM.

MISSED APPROACH: Climb to 1600 then climbing right turn to 3100 direct JIVOM and hold.

AWOS-3 119.675	CHARLOTTE APP CON 134.75 257.2	CLNC DEL (GCO) 124.9	UNICOM 123.05 (CTAF) 0
--------------------------	--	--------------------------------	----------------------------------



ELEV 878	TDZE 872	1600	3100	JIVOM HPJ 13.4
----------	----------	------	------	---------------------



CATEGORY	A	B	C	D
S-ILS 23	1149- $\frac{7}{8}$ 277 (300- $\frac{7}{8}$)			
S-LOC 23	1460-1	588 (600-1)	1460-1 $\frac{3}{4}$ 588 (600-1 $\frac{3}{4}$)	1660-2 $\frac{1}{2}$ 782 (800-2 $\frac{1}{2}$)
CIRCLING	1460-1	582 (600-1)	1660-2 $\frac{1}{4}$ 782 (800-2 $\frac{1}{4}$)	1660-2 $\frac{1}{2}$ 782 (800-2 $\frac{1}{2}$)
GATEQ FIX MINIMUMS				
S-LOC 23	1280-1	408 (500-1)	1280-1 $\frac{1}{8}$ 408 (500-1 $\frac{1}{8}$)	
CIRCLING	1400-1 522 (600-1)	1440-1 562 (600-1)	1660-2 $\frac{1}{4}$ 782 (800-2 $\frac{1}{4}$)	1660-2 $\frac{1}{2}$ 782 (800-2 $\frac{1}{2}$)

SE-2, 16 APR 2026 to 14 MAY 2026

SE-2, 16 APR 2026 to 14 MAY 2026