

LOC/DME I-IPJ 111.15 Chan 48(Y)	APP CRS 233°	Rwy Ldg TDZE Apt Elev	5501 872 878
--	------------------------	-----------------------------	---

ILS Z or LOC Z RWY 23

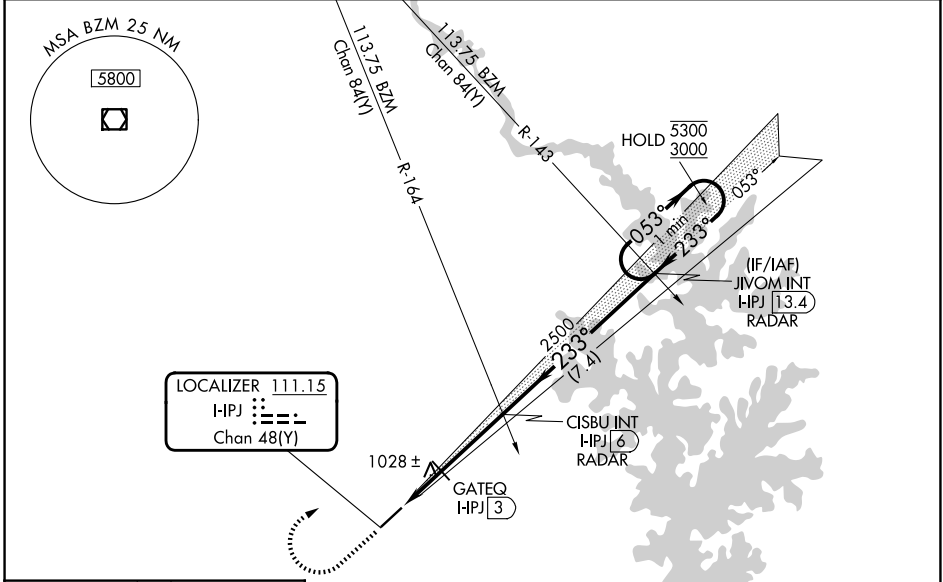
LINCOLN COUNTY RGNL (IPJ)

RADAR or RNAV required for procedure entry.

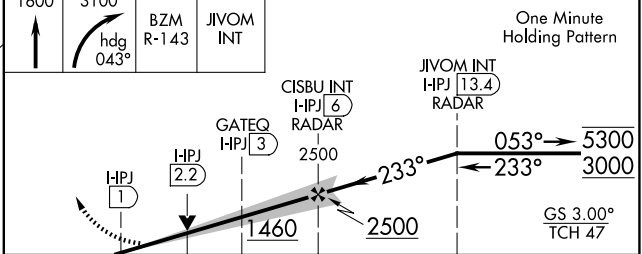
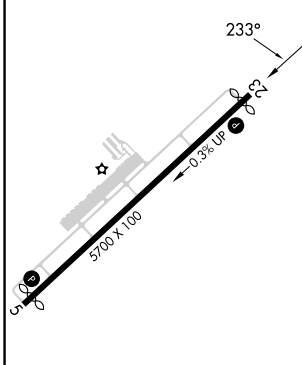
⚠ VDP NA when using CLT altimeter setting. Rwy 23 helicopter visibility reduction below 3/4 SM NA. When local altimeter setting not received, use CLT altimeter setting: increase S-ILS 23 DA to 1213 feet and all visibilities 1/8 SM; increase all MDAs 80 feet and S-LOC 23 visibility Cats C/D 1/8 SM and Circling visibility Cats C/D 1/4 SM; increase GATEQ Fix Minimums S-LOC visibility Cats C/D and Circling visibility Cats C/D 1/4 SM.

MISSED APPROACH: Climb to 1600 then climbing right turn to 3100 on heading 043° and BZM VOR/DME R-143 to JIVOM INT/I-IPJ 13.4 DME/RADAR and hold.

AWOS-3 119.675	CHARLOTTE APP CON 134.75 257.2	CLNC DEL (GCO) 124.9	UNICOM 123.05 (CTAF) 0
--------------------------	--	--------------------------------	----------------------------------



ELEV 878	TDZE 872
----------	----------



CATEGORY	A	B	C	D
S-ILS 23	1149-7/8 277 (300-7/8)			
S-LOC 23	1460-1	588 (600-1)	1460-1 3/4	588 (600-1 3/4)
CIRCLING	1460-1	582 (600-1)	1660-2 1/4 782 (800-2 1/4)	1660-2 1/2 782 (800-2 1/2)
GATEQ FIX MINIMUMS				
S-LOC 23	1280-1	408 (500-1)	1280-1 1/8	408 (500-1 1/8)
CIRCLING	1400-1 522 (600-1)	1440-1 562 (600-1)	1660-2 1/4 782 (800-2 1/4)	1660-2 1/2 782 (800-2 1/2)

FAF to MAP 5 NM					
Knots	60	90	120	150	180
Min:Sec	5:00	3:20	2:30	2:00	1:40

SE-2, 16 APR 2026 to 14 MAY 2026

SE-2, 16 APR 2026 to 14 MAY 2026