

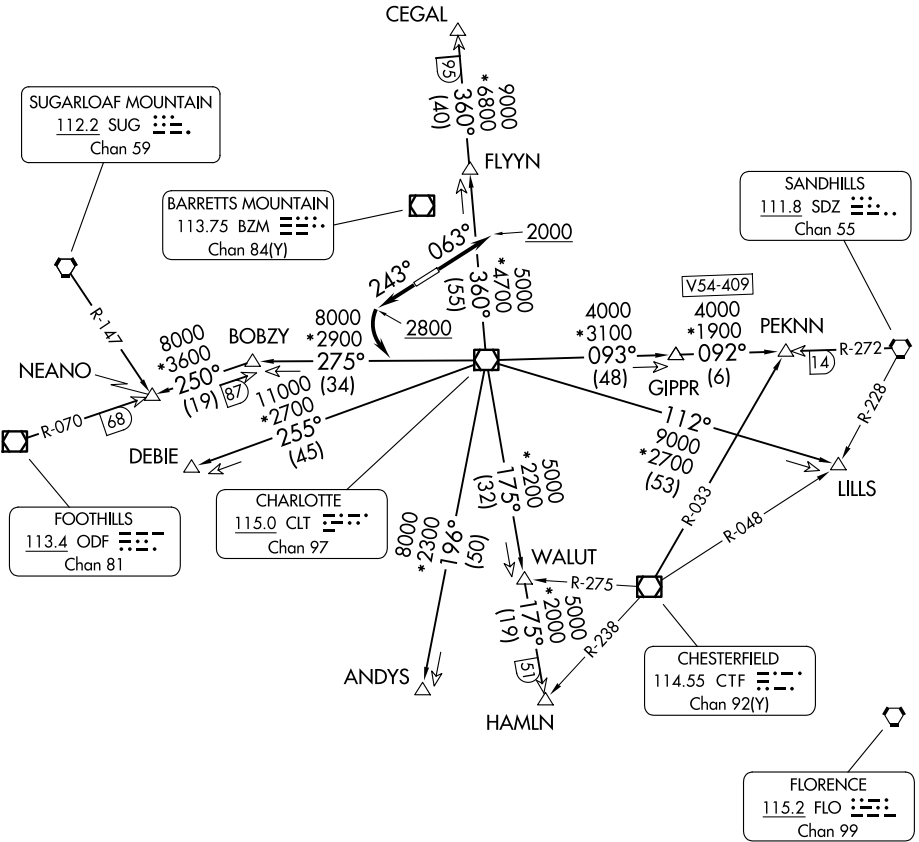
KNIGHTS THREE DEPARTURE

CHARLOTTE DEP CON
134.75 257.2
AWOS-3
119.675
CLNC DEL (GCO)
124.9
UNICOM (CTAF)
123.05

RADAR and DME required.

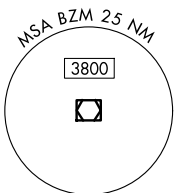
**TOP ALTITUDE:
3000**

TAKEOFF MINIMUMS
Rwys 5, 23: Standard.



SE-2, 16 APR 2026 to 14 MAY 2026

SE-2, 16 APR 2026 to 14 MAY 2026



- NOTE: For propeller aircraft only.
- NOTE: Turboprops: Operate in a manner that will result in best forward speed and climb rate.
- NOTE: Transponder code will be issued via Charlotte clearance delivery.

(CONTINUED ON FOLLOWING PAGE)

NOTE: Chart not to scale.

KNIGHTS THREE DEPARTURE

KNIGHTS THREE DEPARTURE



DEPARTURE ROUTE DESCRIPTION

TAKEOFF RUNWAY 5: Climb on heading 063° to 2000 before proceeding on course, thence. . . .

TAKEOFF RUNWAY 23: Climb on heading 243° to 2800 before turning left, thence. . . .

. . . .expect RADAR vectors to intercept filed/assigned transition or enroute fix/navaid. Maintain 3000, expect filed altitude/flight level 10 minutes after departure.

ANDYS TRANSITION (KNI3.ANDYS): From over CLT VOR/DME on CLT R-196 to ANDYS.

CEGAL TRANSITION (KNI3.CEGAL): From over CLT VOR/DME on CLT R-360 to CEGAL.

DEBIE TRANSITION (KNI3.DEBIE): From over CLT VOR/DME on CLT R-255 to DEBIE.

FLYYN TRANSITION (KNI3.FLYYN): From over CLT VOR/DME on CLT R-360 to FLYYN.

HAMLN TRANSITION (KNI3.HAMLN): From over CLT VOR/DME on CLT R-175 to HAMLN.

LILLS TRANSITION (KNI3.LILLS): From over CLT VOR/DME on CLT R-112 to LILLS.

NEANO TRANSITION (KNI3.NEANO): From over CLT VOR/DME on CLT R-275 to BOBZY, then on ODF R-070 to NEANO.

PEKNN TRANSITION (KNI3.PEKNN): From over CLT VOR/DME on CLT R-093 to GIPPR, then on SDZ R-272 to PEKNN.

SE-2, 16 APR 2026 to 14 MAY 2026

SE-2, 16 APR 2026 to 14 MAY 2026