

WAAS CH 69210 W23A	APP CRS 233°	Rwy Ldg TDZE Apt Elev	5501 872 878
--	------------------------	-----------------------------	---

RNAV (GPS) RWY 23

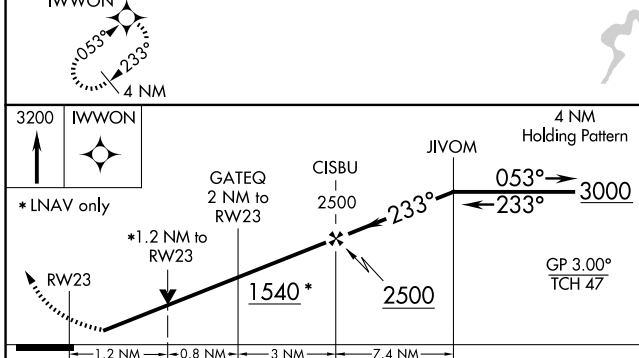
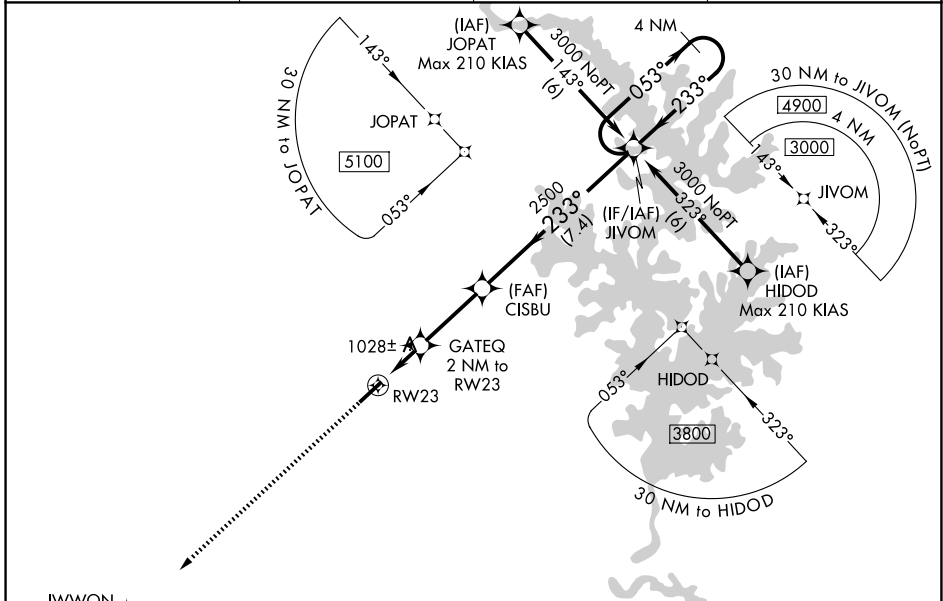
LINCOLN COUNTY RGNL (IPJ)

RNP APCH.

⚠ When local altimeter setting not received, use Charlotte altimeter setting: increase LPV DA to 1212 feet, LNAV/VNAV DA to 1204 feet and all visibilities 1/2 SM; increase all MDAs 80 feet and visibility Cats C and D 1/4 SM. Baro-VNAV and VDP NA when using Charlotte altimeter setting. Rwy 23 helicopter visibility reduction below 3/4 SM NA. For uncompensated Baro-VNAV systems, LNAV/VNAV NA below -16°C or above 54°C.

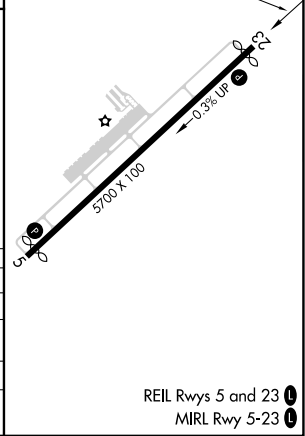
MISSED APPROACH:
Climb to 3200 direct
IWWON and hold.

AWOS-3 119.675	CHARLOTTE APP CON 134.75 257.2	CLNC DEL (GCO) 124.9	UNICOM 123.05 (CTAF) 0
--------------------------	--	--------------------------------	----------------------------------



ELEV 878	TDZE 872
----------	----------

CATEGORY	A	B	C	D
LPV DA		1149-7/8	277 (300-7/8)	
LNAV/VNAV DA		1141-7/8	269 (300-7/8)	
LNAV MDA	1280-1	408 (500-1)	1280-1 1/8	408 (500-1 1/8)
CIRCLING	1400-1 522 (600-1)	1440-1 562 (600-1)	1640-2 1/4 762 (800-2 1/4)	1640-2 1/2 762 (800-2 1/2)



REIL Rwy 5 and 23 0
MIRL Rwy 5-23 0

SE-2, 16 APR 2026 to 14 MAY 2026

SE-2, 16 APR 2026 to 14 MAY 2026