

APP CRS	Rwy Ldg	<b>6669</b>
<b>229°</b>	TDZE	<b>76</b>
	Apt Elev	<b>76</b>

# RNAV (GPS) RWY 23

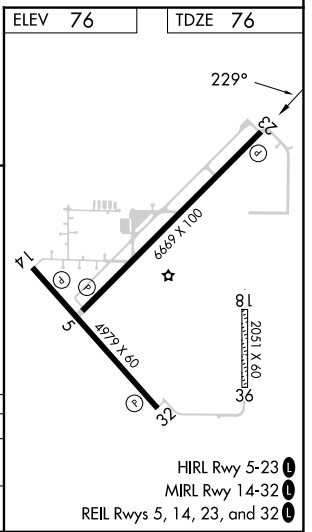
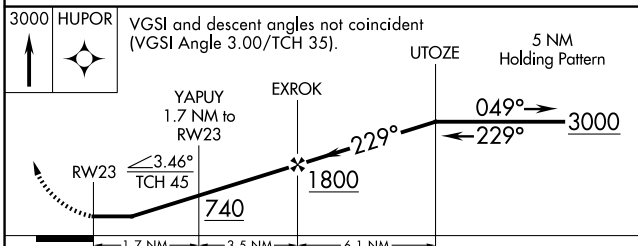
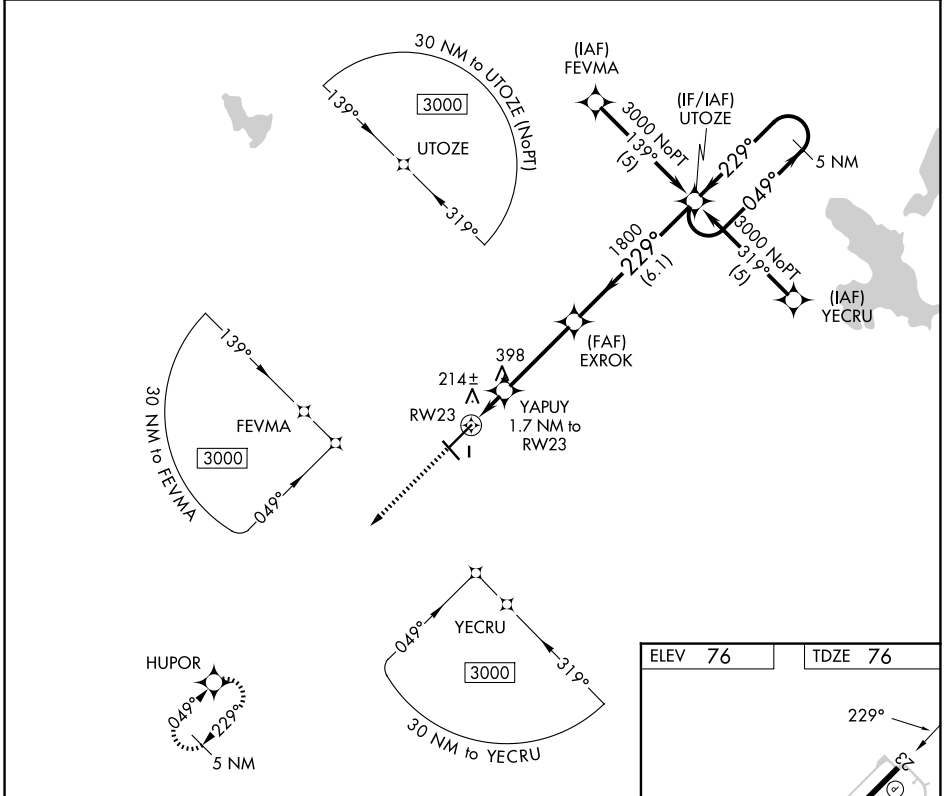
WILLISTON RGNL (X60)

RNP APCH.

**⚠** When local altimeter setting not received, use Ocala altimeter setting and increase all MDAs 60 feet and all Cat C visibilities  $\frac{1}{4}$  SM. Circling Rwy 14, 32 NA at night. Rwy 23 helicopter visibility reduction below  $\frac{3}{4}$  SM NA. Circling NA to Rwy's 18 and 36.

**⚠** MISSED APPROACH: Climb to 3000 direct HUPOR and hold.

AWOS-3T <b>118.425</b>	JACKSONVILLE APP CON <b>118.6 251.15</b>	UNICOM <b>122.975 (CTAF) 0</b>
---------------------------	---	-----------------------------------



CATEGORY	A	B	C	D
LNVA MDA	480-1	404 (500-1)	480-1 $\frac{1}{4}$ 404 (500-1 $\frac{1}{4}$ )	NA
CIRCLING	520-1 444 (500-1)	640-1 564 (600-1)	840-2 $\frac{1}{4}$ 764 (800-2 $\frac{1}{4}$ )	NA

HIRL Rwy 5-23 0  
MIRL Rwy 14-32 0  
REIL Rwy's 5, 14, 23, and 32 0

SE-3, 16 APR 2026 to 14 MAY 2026

SE-3, 16 APR 2026 to 14 MAY 2026