

WAAS CH <b>93515</b> <b>W36A</b>	APP CRS <b>002°</b>	Rwy Ldg <b>3513</b> TDZE <b>73</b> Apt Elev <b>74</b>
--	------------------------	---

# RNAV (GPS) RWY 36

HOLK FLD AT FOLEY MUNI (5R4)

RNP APCH - GPS

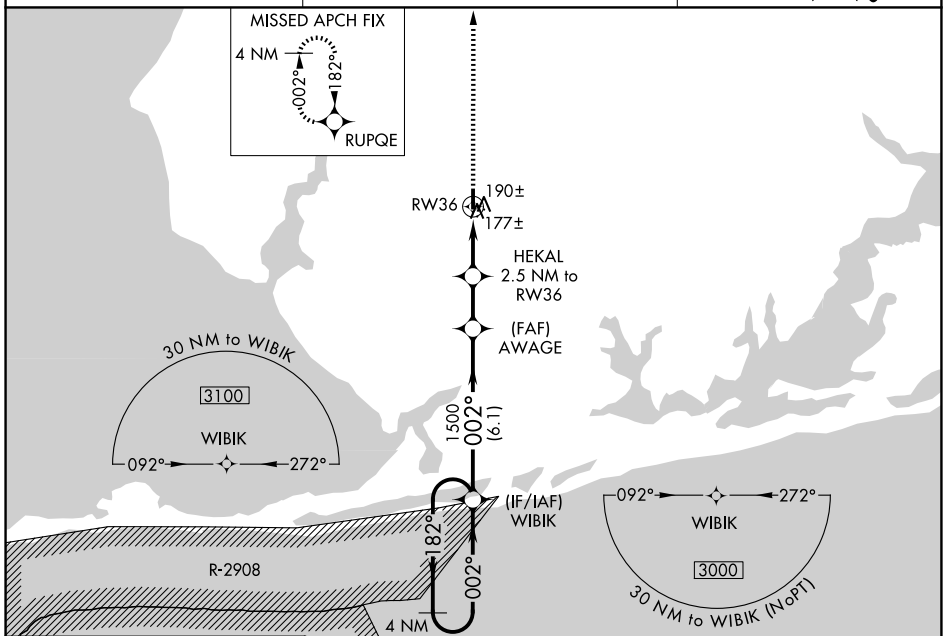
**NA** Procedure NA at night. Rwy 36 helicopter visibility reduction below 1 SM NA. Use Fairhope altimeter setting. When not received, use Gulf Shores altimeter setting and increase all MDA 20 feet; increase LP and LNAV Cat C visibility 1/8 SM and Circling Cat C visibility 1/4 SM.

**MISSED APPROACH:**  
Climb to 3100 direct RUPQE and hold, continue climb-in-hold to 3100.

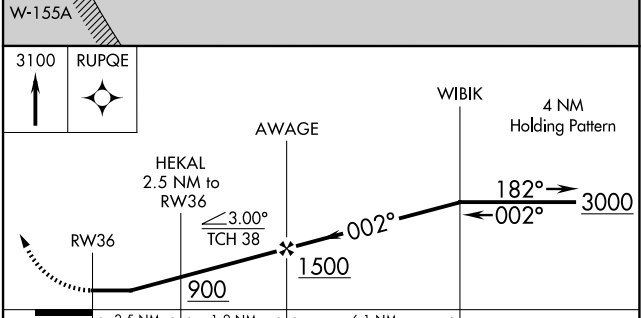
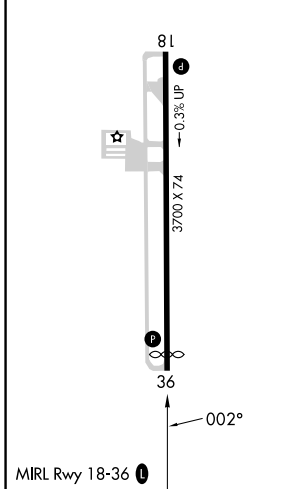
CQF AWOS-3PT  
**118.425**

PENSACOLA APP CON  
**118.6 380.6**

UNICOM  
**123.05 (CTAF) 0**



ELEV 74	TDZE 73
---------	---------



CATEGORY	A	B	C	D
LP MDA	500-1	427 (500-1)	500-1¼ 427 (500-1¼)	NA
LNAV MDA	500-1	427 (500-1)	500-1¼ 427 (500-1¼)	NA
CIRCLING	680-1	606 (700-1)	880-2¼ 806 (900-2¼)	NA

SE-4, 16 APR 2026 to 14 MAY 2026

SE-4, 16 APR 2026 to 14 MAY 2026