

WAAS CH 50510 W24A	APP CRS 240°	Rwy Idg TDZE Apt Elev	6005 609 609
--	------------------------	-----------------------------	---

RNAV (GPS) RWY 24

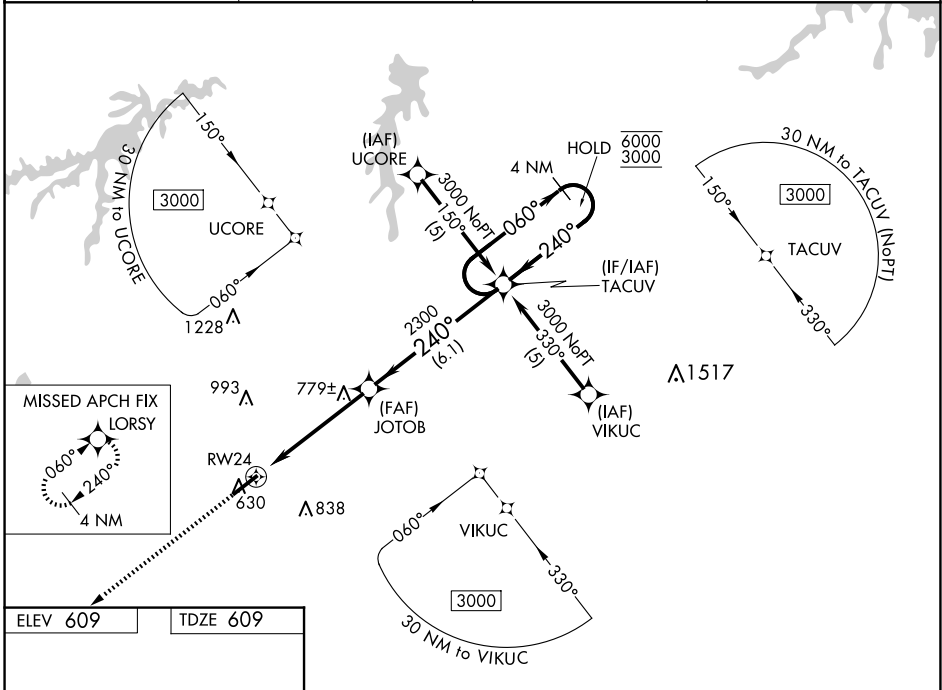
RALEIGH RGNL AT PERSON COUNTY (TDF)

RNP APCH.

▼ Rwy 24 helicopter visibility reduction below ¾ SM NA. For uncompensated
 ▲ Baro-VNAV systems, LNAV/VNAV NA below -16°C or above 54°C.

MISSED APPROACH:
 Climb to 3000 direct
 LORSY and hold.

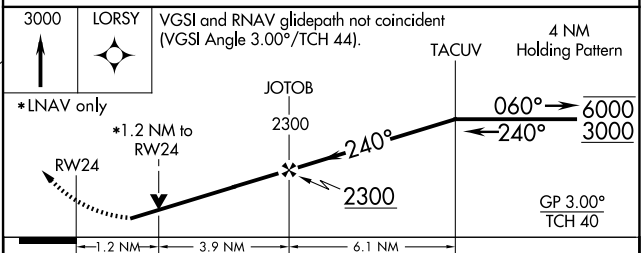
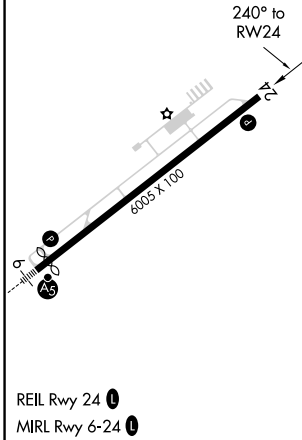
AWOS-3 126.725	RALEIGH APP CON 132.35 256.9	GCO 119.7	UNICOM 122.7 (CTAF) 0
--------------------------	--	---------------------	---------------------------------



SE-2, 16 APR 2026 to 14 MAY 2026

SE-2, 16 APR 2026 to 14 MAY 2026

ELEV 609	TDZE 609
-----------------	-----------------



CATEGORY	A	B	C	D
LPV DA		920-1	311 (400-1)	
LNAV/VNAV DA		997-1½	388 (400-1½)	
LNAV MDA	1040-1	431 (500-1)	1040-1¼ 431 (500-1¼)	1040-1½ 431 (500-1½)
CIRCLING	1080-1	471 (500-1)	1300-2 691 (700-2)	1300-2¼ 691 (700-2¼)