

WAAS CH 86512 W06A	APP CRS 060°	Rwy Idg TDZE Apt Elev	5702 604 609
--	------------------------	-----------------------------	---

RNAV (GPS) RWY 6

RALEIGH RGNL AT PERSON COUNTY (TDF)

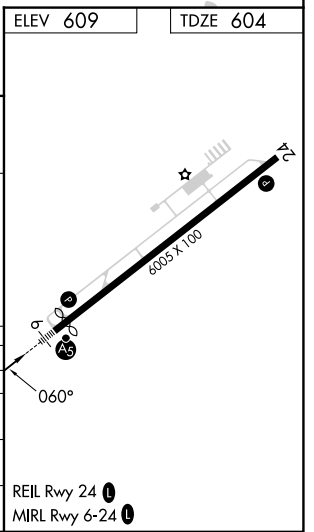
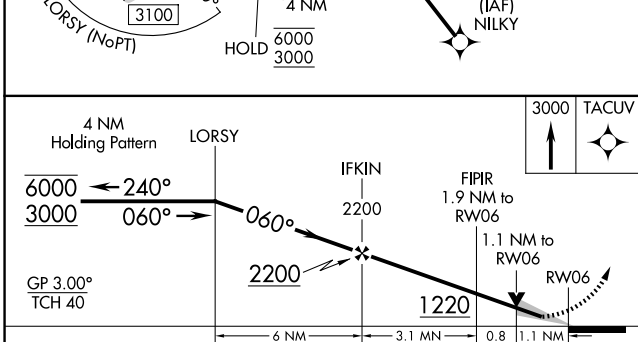
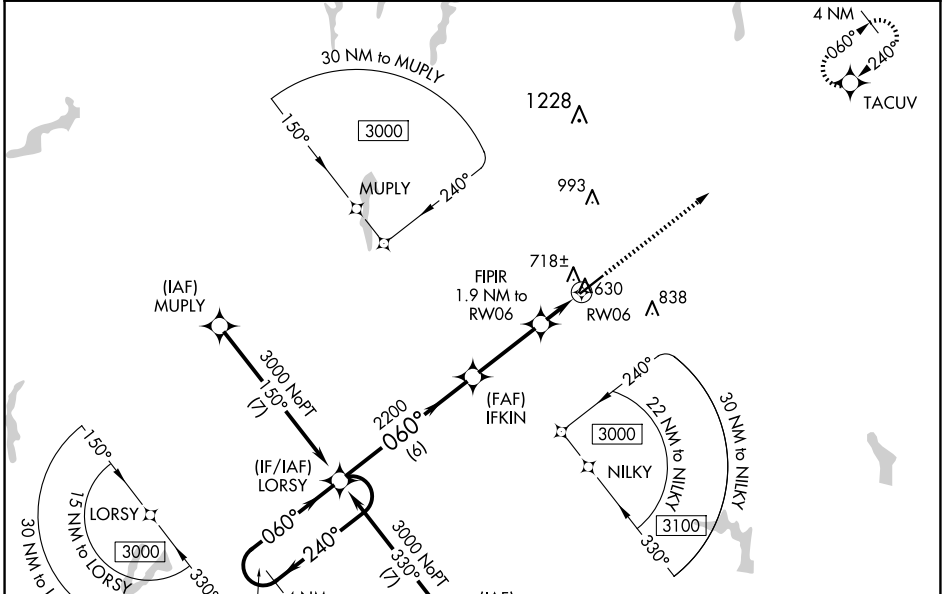
RNP APCH - GPS.

For uncompensated Baro-VNAV systems, LNAV/VNAV NA below -16°C or above 54°C. For inop ALS, increase LNAV/VNAV all Cats visibility to ½ SM and LNAV Cat C/D visibility to 1 SM.

MALS

MISSED APPROACH: Climb to 3000 direct TACUV and hold.

AWOS-3 126.725	RALEIGH APP CON 132.35 256.9	GCO 119.7	UNICOM 122.7 (CTAF) 0
--------------------------	--	---------------------	---------------------------------



CATEGORY	A	B	C	D
LPV DA		804-½	200 (200-½)	
LNAV/VNAV DA		879-½	275 (300-1½)	
LNAV MDA	980-½	376 (400-½)	980-⅝	376 (400-⅝)
CIRCLING	1080-1	471 (500-1)	1300-2 691 (700-2)	1300-2¼ 691 (700-2¼)

SE-2, 16 APR 2026 to 14 MAY 2026

SE-2, 16 APR 2026 to 14 MAY 2026