

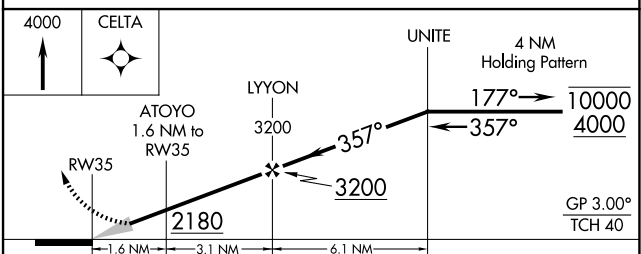
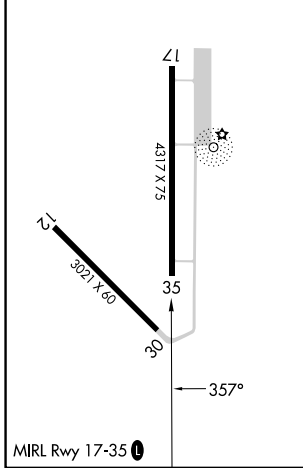
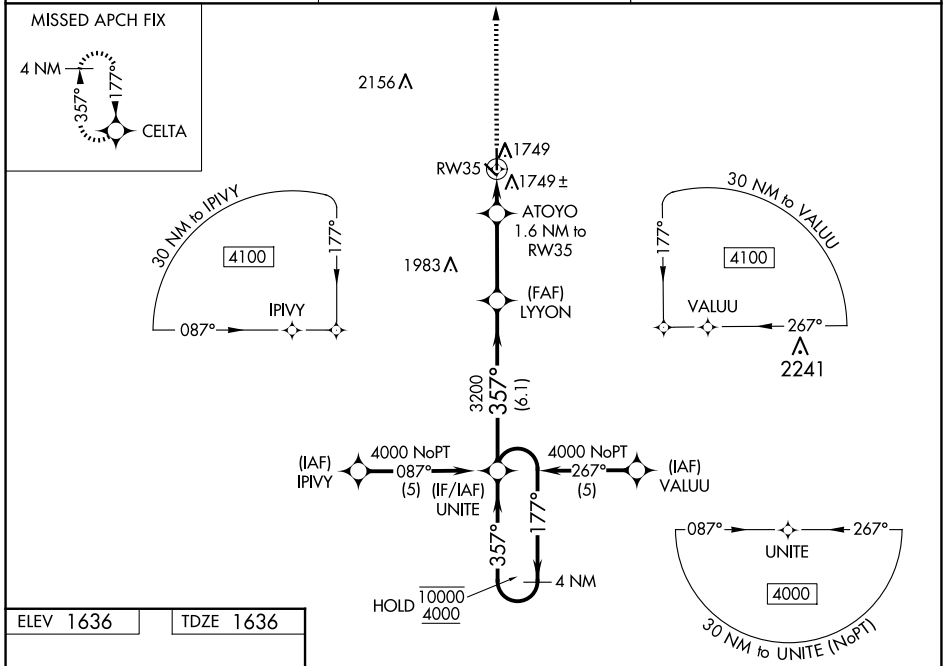
WAAS CH <b>93614</b> W35A	APP CRS <b>357°</b>	Rwy Idg <b>4317</b> TDZE <b>1636</b> Apt Elev <b>1636</b>
---------------------------------	------------------------	---

# RNAV (GPS) RWY 35

FAIRMONT STATE (F<sup>M</sup>Z)

RNP APCH - GPS.	MISSED APPROACH: Climb to 4000 direct CELTA and hold.
-----------------	---

JYR AWOS-3 <b>124.175</b>	MINNEAPOLIS CENTER <b>119.4 278.8</b>	CTAF <b>122.9</b>
------------------------------	--	----------------------



CATEGORY	A	B	C	D
LPV DA	1934-7/8	298 (300-7/8)		NA
LNAV/VNAV DA	2094-1 3/8	458 (500-1 3/8)		NA
LNAV MDA	2060-1	424 (500-1)		NA
$\Delta$ CIRCLING	2120-1	484 (500-1)		NA

NC-2, 16 APR 2026 to 14 MAY 2026

NC-2, 16 APR 2026 to 14 MAY 2026