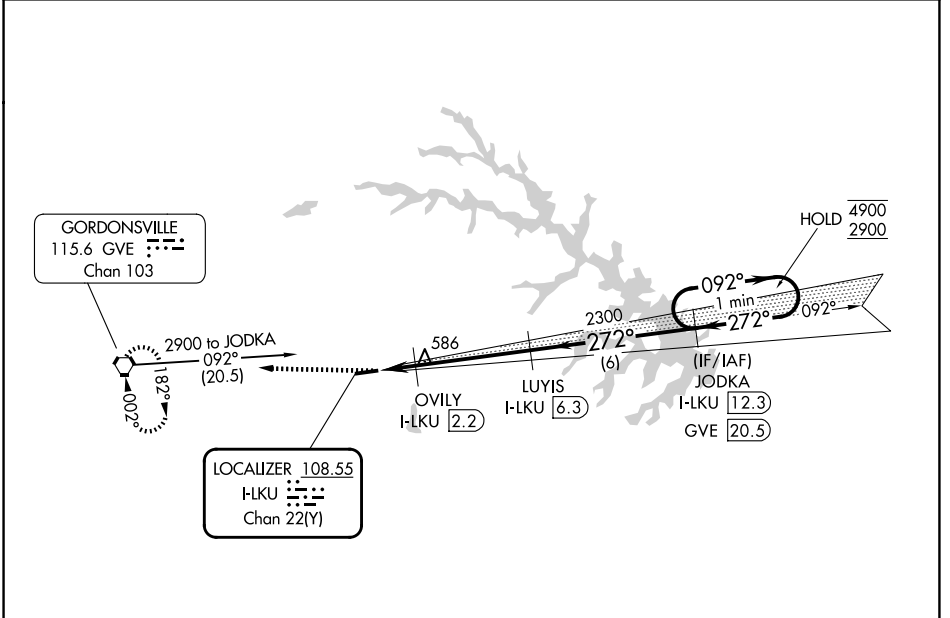


LOC/DME I-LKU 108.55 Chan 22 (Y)	APP CRS 272°	Rwy Ldg 4300 TDZE 494 Apt Elev 494
--	------------------------	---

LOC RWY 27

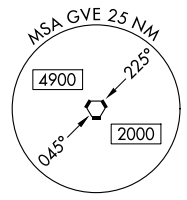
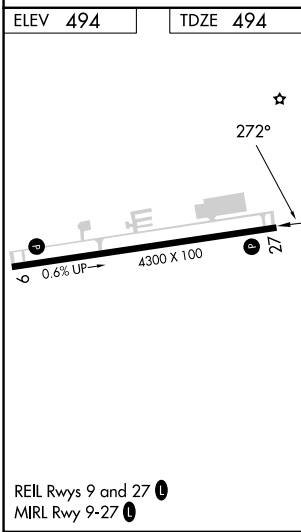
LOUISA COUNTY/FREEMAN FLD (LKU)

DME required.		MISSED APPROACH: Climb to 2900 direct GVE VORTAC and hold, continue climb-in-hold to 2900.
AWOS-3 119.475	POTOMAC APP CON 132.85 323.125	UNICOM 122.975 (CTAF) 0



NE-3, 16 APR 2026 to 14 MAY 2026

NE-3, 16 APR 2026 to 14 MAY 2026



2900	GVE	JODKA I-LKU [12.3]	One Minute Holding Pattern	
I-LKU [0.8]	OVLV I-LKU [2.2]	LUYIS I-LKU [6.3]	4900 2900	
980	2300	272°	092°	
1.4 NM	4.1 NM	6 NM		
CATEGORY	A	B	C	D
S-LOC 27	900-1	406 (500-1)		NA
CIRCLING	920-1 426 (500-1)	960-1 466 (500-1)		NA

LOC RWY 27