

WAAS CH <b>58318</b> <b>W27A</b>	APP CRS <b>272°</b>	Rwy Ldg TDZE Apt Elev	<b>4300</b> <b>494</b> <b>494</b>
--	------------------------	-----------------------------	---

# RNAV (GPS) RWY 27

LOUISA COUNTY/FREEMAN FLD (LKU)

RNP APCH - GPS.

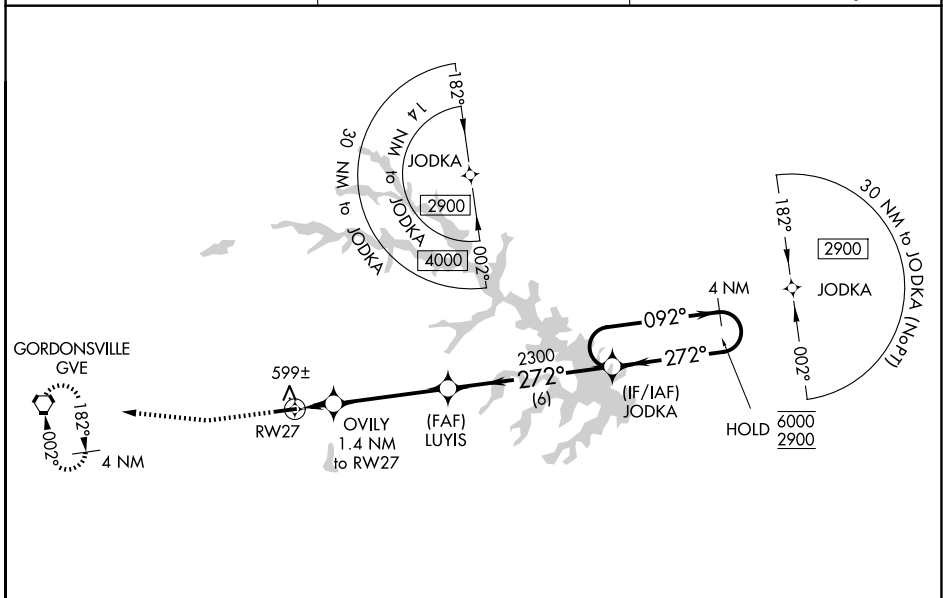
**⚠** Circling NA north of Rwy 9 and 27. Baro-VNAV NA when using OMH altimeter setting. For uncompensated Baro-VNAV systems, LNAV/VNAV NA below -1.5°C or above 54°C. When local altimeter setting not received, use OMH altimeter setting and increase LPV DA to 785 feet and all visibilities 1/2 SM. Increase LNAV/VNAV DA to 785 feet and all visibilities 1/2 SM. Increase all MDA 60 feet.

**MISSED APPROACH:** Climb to 1000 then climbing right turn to 2900 direct GVE VORTAC and hold, continue climb-in-hold to 2900.

AWOS-3  
**119.475**

POTOMAC APP CON  
**132.85 323.125**

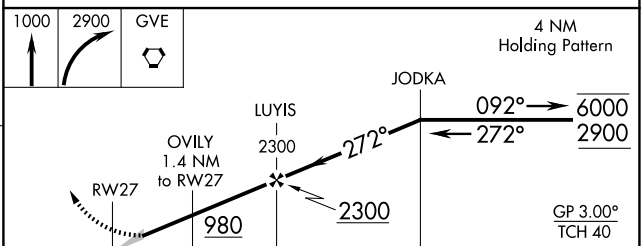
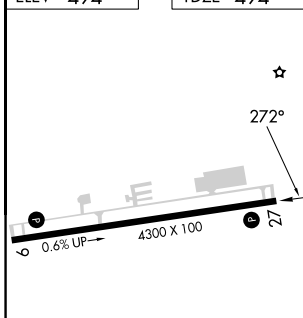
UNICOM  
**122.975 (CTAF) 0**



NE-3, 16 APR 2026 to 14 MAY 2026

NE-3, 16 APR 2026 to 14 MAY 2026

ELEV <b>494</b>	TDZE <b>494</b>
-----------------	-----------------



CATEGORY	A	B	C	D
LPV DA	744-3/4	250 (300-3/4)		NA
LNAV/VNAV DA	744-3/4	250 (300-3/4)		NA
LNAV MDA	860-1	366 (400-1)		NA
CIRCLING	920-1 426 (500-1)	960-1 466 (500-1)		NA