

WAAS CH 48843 W09A	APP CRS 092°	Rwy Ldg TDZE Apt Elev	4300 489 494
--	------------------------	-----------------------------	---

RNAV (GPS) RWY 9
LOUISA COUNTY/FREEMAN FLD (LKU)

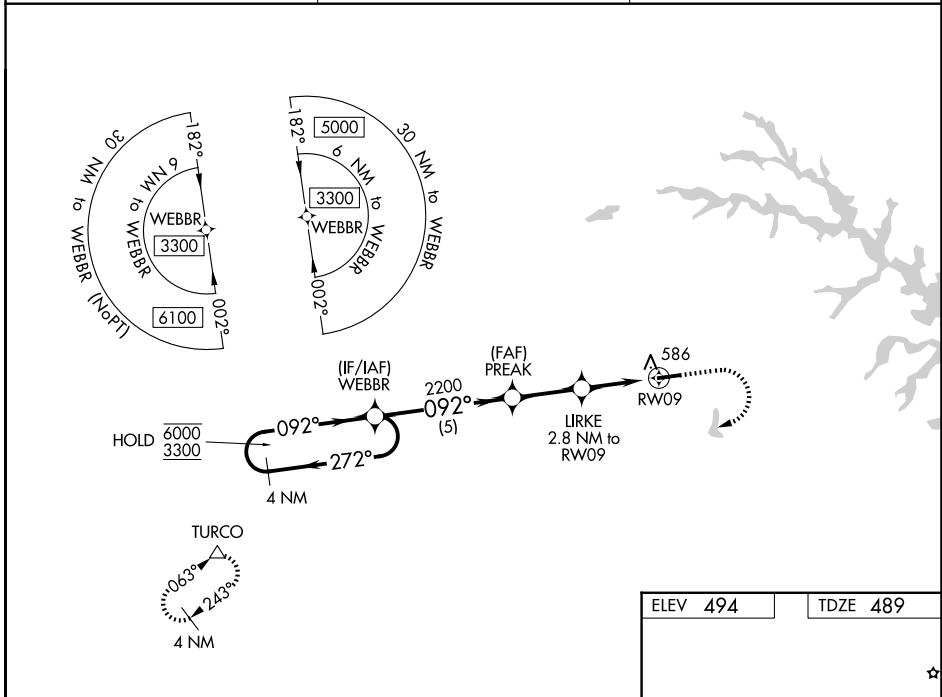
RNP APCH - GPS.

▼ Rwy 9 helicopter visibility reduction below 3/4 SM NA. Circling NA north of Rwy 9-27.

▲ For uncompensated Baro-VNAV systems, LNAV/VNAV NA below -15°C or above 54°C. Baro-VNAV and VDP NA when using OMH altimeter setting. When local altimeter setting not received, use OMH altimeter setting and increase LPV DA to 780 feet and all visibilities 1/8 SM, LNAV/VNAV DA to 789 feet and all visibilities 1/8 SM. Increase all MDAs 60 feet.

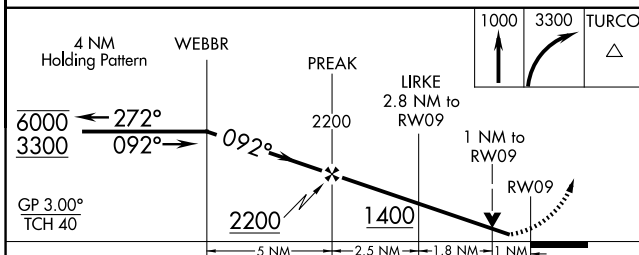
MISSED APPROACH: Climb to 1000 then climbing right turn to 3300 direct TURCO and hold.

AWOS-3 119,475	POTOMAC APP CON 132.85 323.125	UNICOM 122.975 (CTAF)
--------------------------	--	---------------------------------

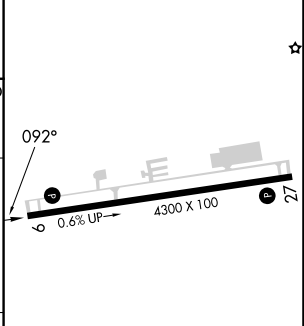


NE-3, 16 APR 2026 to 14 MAY 2026

NE-3, 16 APR 2026 to 14 MAY 2026



ELEV 494	TDZE 489
----------	----------



CATEGORY	A	B	C	D
LPV DA	739-3/4	250 (300-3/4)		NA
LNAV/VNAV DA	748-3/4	259 (300-3/4)		NA
LNAV MDA	840-1	351 (400-1)		NA
CIRCLING	920-1 426 (500-1)	960-1 466 (500-1)		NA

REIL Rwy 9 and 27

MIRL Rwy 9-27