

APP CRS <b>175°</b>	Rwy Ldg TDZE Apt Elev	<b>N/A</b> <b>N/A</b> <b>2470</b>
------------------------	--------------------------	-----------------------------------------

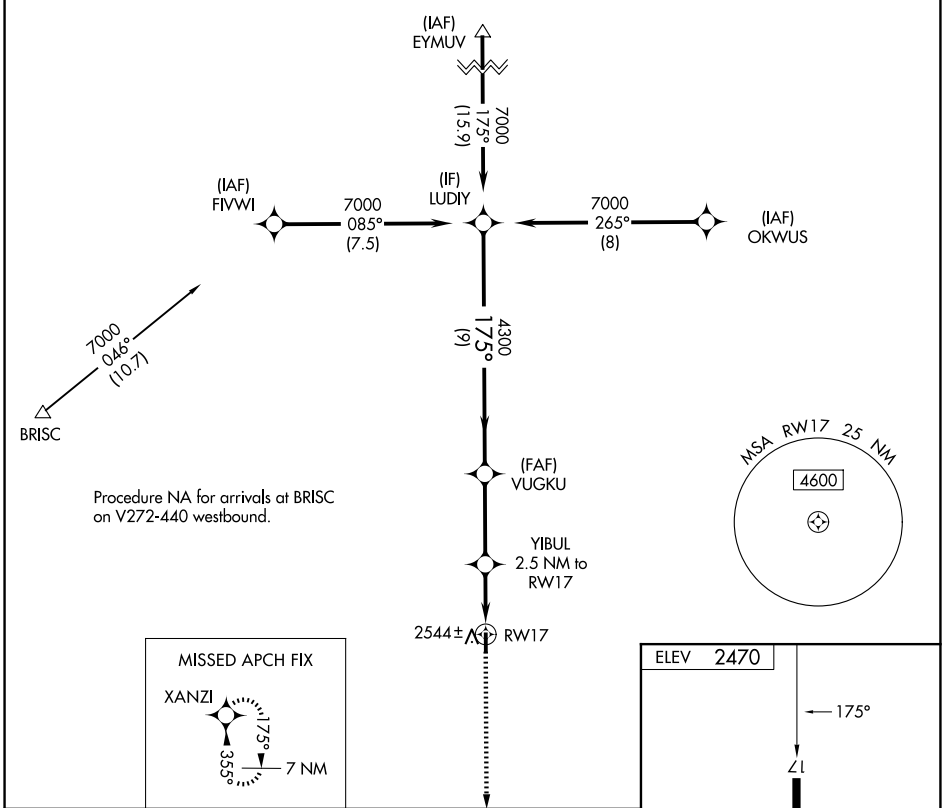
# RNAV (GPS)-A

WHEELER MUNI (T59)

**NA** Helicopter visibility reduction below 3/4 SM NA. DME/DME RNP-0.3 NA. Use Hemphill County altimeter setting.

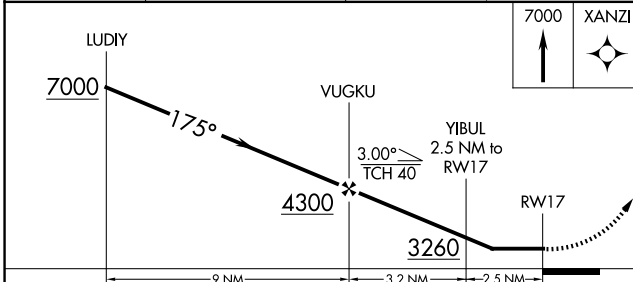
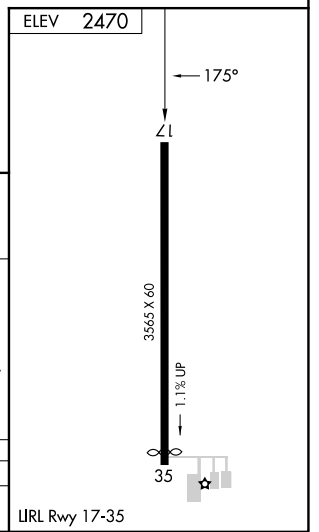
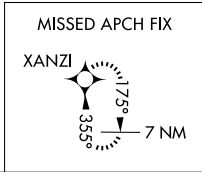
**MISSED APPROACH:** Climb to 7000 direct XANZI and hold, continue climb-in-hold to 7000.

HHF AWOS-3 <b>119.025</b>	ALBUQUERQUE CENTER <b>127.85 285.475</b>	CTAF <b>122.9</b>
------------------------------	---------------------------------------------	----------------------



SC-2, 16 APR 2026 to 14 MAY 2026

SC-2, 16 APR 2026 to 14 MAY 2026



CATEGORY	A	B	C	D
CIRCLING	2980-1 510 (600-1)	3000-1 530 (600-1)	3020-1½ 550 (600-1½)	NA