

(BNYRD6.BNYRD) 24249

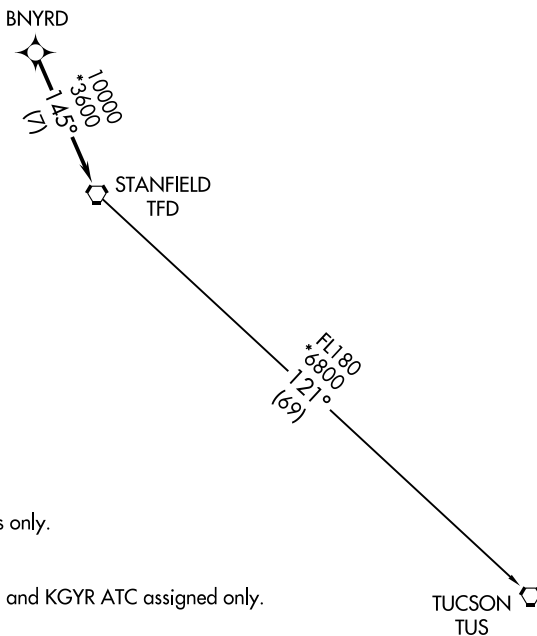
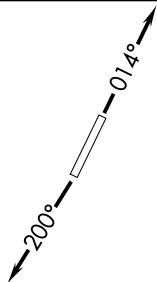
BNYRD SIX DEPARTURE (RNAV)

AL-6915 (FAA)

GLENDALE RGNL (G^{ET}U)
GLENDALE, ARIZONA

**TOP ALTITUDE:
ASSIGNED BY ATC**

ATIS
119.425
GND CON
118.0
GLENDALE TOWER ★
121.0
LUKE DEP CON ★
118.15 363.125
PHOENIX DEP CON
120.7 239.0



TAKEOFF MINIMUMS

Rwys 1, 19: Standard.

- NOTE: RNAV 1.
- NOTE: Turbojets and turboprops only.
- NOTE: RADAR required.
- NOTE: GPS required.
- NOTE: Aircraft departing KGEU and KGYR ATC assigned only.

NOTE: Chart not to scale.



DEPARTURE ROUTE DESCRIPTION

TAKEOFF RUNWAY 1: Climb heading 014° or as assigned by ATC, thence. . . .

TAKEOFF RUNWAY 19: Climb heading 200° or as assigned by ATC, thence. . . .

. . . expect RADAR vectors to BNYRD, then on track 145° to TFD VORTAC, then on (transition), maintain ATC assigned altitude, expect filed altitude 3 minutes after departure.

TUCSON TRANSITION (BNYRD6.TUS)

BNYRD SIX DEPARTURE (RNAV)

(BNYRD6.BNYRD) 24MAY18

GLENDALE, ARIZONA
GLENDALE RGNL (G^{ET}U)

SW-4, 16 APR 2026 to 14 MAY 2026

SW-4, 16 APR 2026 to 14 MAY 2026