

# LALUZ SIX DEPARTURE (RNAV)

AL-6915 (FAA)

GLENDALE RGNL (GETU)  
GLENDALE, ARIZONA

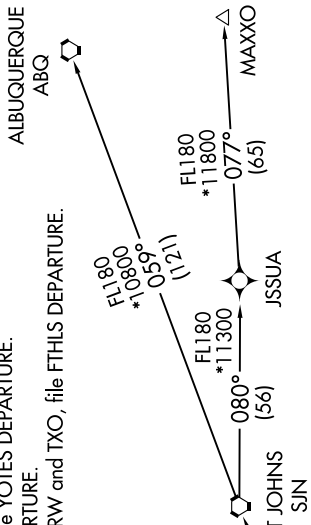
SW-4, 16 APR 2026 to 14 MAY 2026

ATIS 119.425  
 GND CON 118.0  
 GLENDALE TOWER \* 121.0  
 LUKE DEP CON \* 118.15 363.125  
 PHOENIX DEP CON 120.7 239.0

NOTE: RNAV 1.  
 NOTE: Turbojets and turboprops only.  
 NOTE: RADAR required.  
 NOTE: GPS required.  
 NOTE: SJN TRANSITION for ABQ terminal arrivals only.  
 NOTE: MAXXO TRANSITION ATC assigned only.  
 NOTE: Aircraft filing over DEN, RSK, ALS, and points north of ALS, file YOTES DEPARTURE.  
 NOTE: Aircraft filing over ABQ, CIM, FTI, and GCK, file LALUZ DEPARTURE.  
 NOTE: Aircraft filing over ACH, IBL, ONM, CNX, PNH, MMB, TCC, IRW, and TXO, file FTHLS DEPARTURE.  
 NOTE: Aircraft departing KGEU and KGYR ATC assigned only.

TAKEOFF MINIMUMS  
 Rwy 1, 19: Standard.

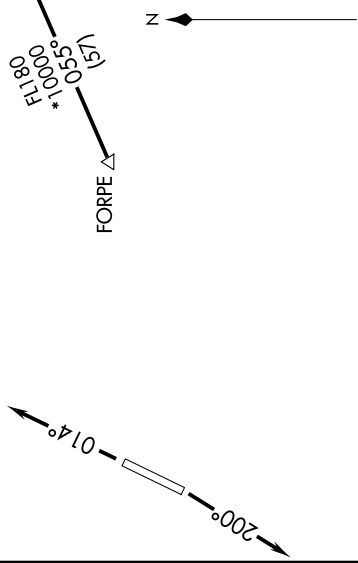
## TOP ALTITUDE: ASSIGNED BY ATC



ALBUQUERQUE  
ABQ

## DEPARTURE ROUTE DESCRIPTION

$\nabla$  TAKEOFF RUNWAY 1: Climb heading 014° or as assigned by ATC, thence . . . .  
 TAKEOFF RUNWAY 19: Climb heading 200° or as assigned by ATC, thence . . . .  
 . . . . expect RADAR vectors to FORPE, then on track 055° to LALUZ, then on (transition). Maintain ATC assigned altitude, expect filed altitude 3 minutes after departure.  
 ALBUQUERQUE TRANSITION (LALUZ6.ABQ)  
 MAXXO TRANSITION (LALUZ6.MAXXO)  
 ST JOHNS TRANSITION (LALUZ6.SJN)



NOTE: Chart not to scale.

SW-4, 16 APR 2026 to 14 MAY 2026