

WAAS CH <b>90306</b> <b>W01A</b>	APP CRS <b>014°</b>	Rwy Idg TDZE Apt Elev	<b>6279</b> <b>1049</b> <b>1071</b>
--	------------------------	-----------------------------	---

# RNAV (GPS) RWY 1

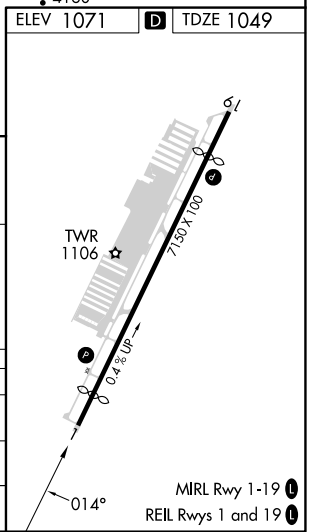
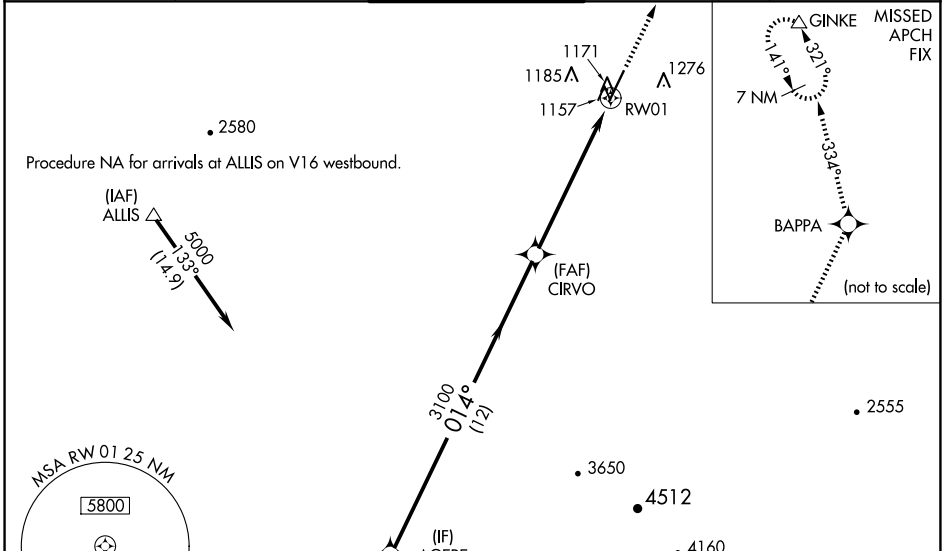
GLENDALE RGNL (GEU)

**RNP APCH.**

**⚠** Baro-VNAV NA when using Phoenix Sky Harbor Intl altimeter setting. For uncompensated Baro-VNAV systems, LNAV/VNAV NA below -17°C or above 47°C. When local altimeter setting not received, use Phoenix Sky Harbor Intl altimeter setting; increase LPV DA to 1438 feet; increase LNAV/VNAV DA to 1517 feet and all visibilities ¼ SM; increase all MDA 60 feet and LNAV Cat C and D visibility ¼ SM. Night landing: Rwy 1, Cat C and D operational VGSI required, remain on or above VGSI glidepath until threshold. Rwy 1 helicopter visibility reduction below ¾ SM NA.

**MISSED APPROACH:** Climb to 10000 direct BAPPA and on 334° track to GINKE and hold, continue climb-in-hold to 10000.

ATIS <b>119.425</b>	LUKE APP CON * <b>118.15 363.125</b>	GLENDALE TOWER * <b>121.0 (CTAF) 0</b>	GND CON <b>118.0</b>	UNICOM <b>122.95</b>
------------------------	---	---	-------------------------	-------------------------



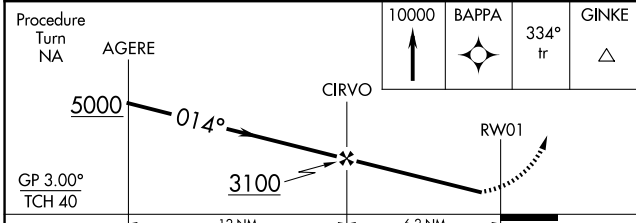
Procedure NA for arrivals at ALLIS on V16 westbound.

(IAF) ALLIS  $\Delta$  5000 139° (14.9)

Procedure NA for arrivals at POTER on V94-95 eastbound and on V95 southbound.

(IF) AGERE 5000 312° (125)

(IAF) POTER 5000 125°



Procedure Turn NA	AGERE	10000	BAPPA	334° tr	GINKE $\Delta$
GP 3.00° TCH 40					
CATEGORY	A	B	C	D	
LPV DA		1378-1¼	329 (400-1¼)		
LNAV/VNAV DA		1457-1½	408 (400-1½)		
LNAV MDA	1440-1	391 (400-1)	1440-1⅛ 391 (400-1⅛)	1440-1¼ 391 (400-1¼)	

SW-4, 16 APR 2026 to 14 MAY 2026

SW-4, 16 APR 2026 to 14 MAY 2026