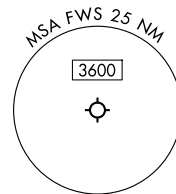


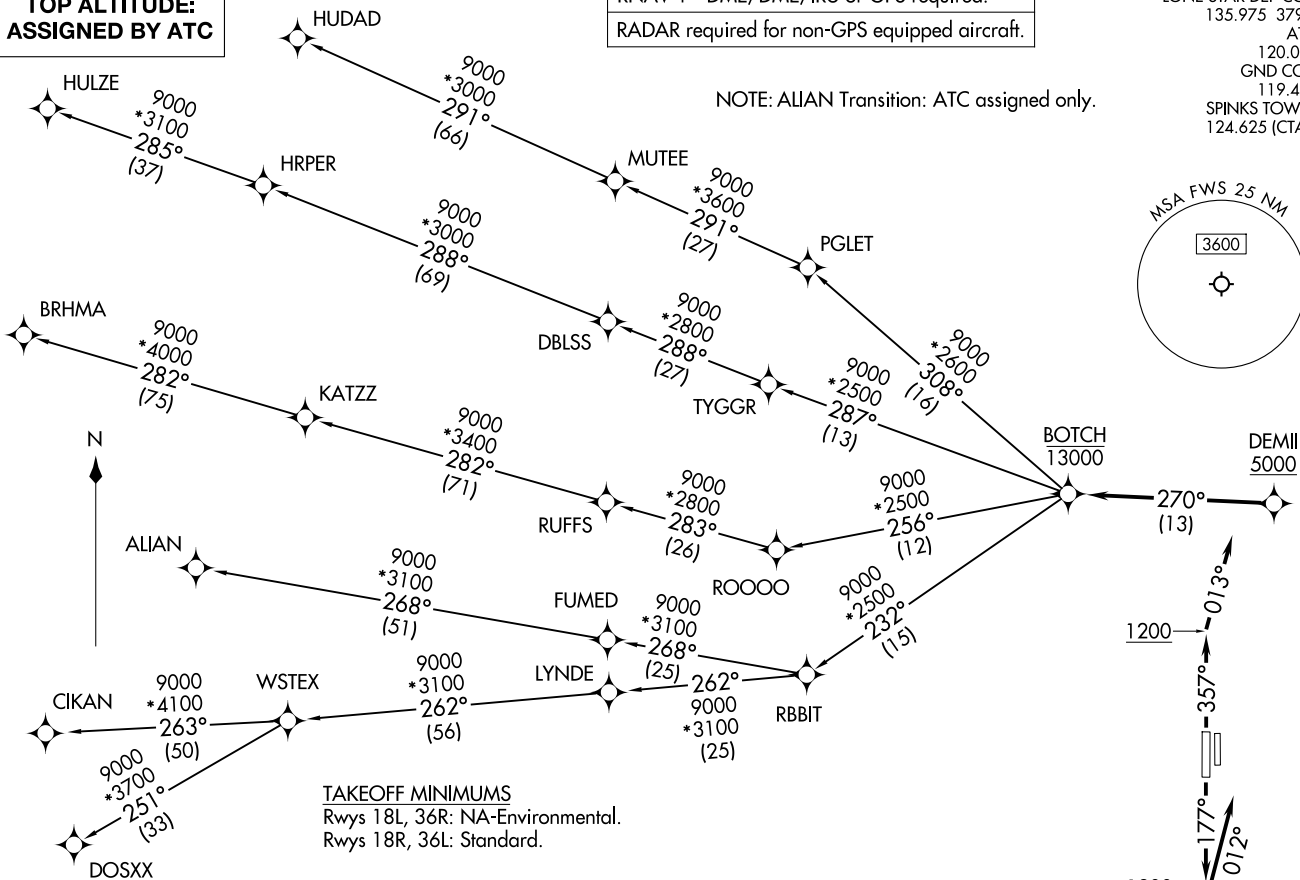
RNAV 1 - DME/DME/IRU or GPS required.
RADAR required for non-GPS equipped aircraft.

LONE STAR DEP CON
135.975 379.9
ATIS
120.025
GND CON
119.475
SPINKS TOWER *
124.625 (CTAF)

NOTE: ALIAN Transition: ATC assigned only.



TOP ALTITUDE:
ASSIGNED BY ATC



TAKEOFF MINIMUMS
Rwys 18L, 36R: NA-Environmental.
Rwys 18R, 36L: Standard.

(CONTINUED ON FOLLOWING PAGE)

NOTE: Chart not to scale.

BOTCH ONE DEPARTURE (RNAV)
(BOTCH1 .BOTCH) 17ZAPR25

FORT WORTH, TEXAS
FORT WORTH SPINKS (F'W'S)

(BOTCH1 .BOTCH) 25107
BOTCH ONE DEPARTURE (RNAV)

AL-6917 (FAA)
FORT WORTH SPINKS (F'W'S)
FORT WORTH, TEXAS

BOTCH ONE DEPARTURE (RNAV)



DEPARTURE ROUTE DESCRIPTION

TAKEOFF RUNWAY 18R: Climb on heading 177° to 1200, then on heading 012° or as assigned by ATC, for vectors to cross DEMII at or above 5000, thence. . .

TAKEOFF RUNWAY 36L: Climb on heading 357° to 1200, then on heading 013° or as assigned by ATC, for vectors to cross DEMII at or above 5000, thence. . .

. . . on track 270° to cross BOTCH at or below 13000, then on (transition). Maintain ATC assigned altitude, expect filed altitude 10 minutes after departure.

ALIAN TRANSITION (BOTCH1.ALIAN)

BRHMA TRANSITION (BOTCH1.BRHMA)

CIKAN TRANSITION (BOTCH1.CIKAN)

DOSXX TRANSITION (BOTCH1.DOSXX)

HUDAD TRANSITION (BOTCH1.HUDAD)

HULZE TRANSITION (BOTCH1.HULZE)

WSTEX TRANSITION (BOTCH1.WSTEX)

SC-2, 16 APR 2026 to 14 MAY 2026

SC-2, 16 APR 2026 to 14 MAY 2026