

GARLAND SIX DEPARTURE  
(GARL6.TT) 17APR25

FORT WORTH, TEXAS  
FORT WORTH SPINKS (F'WS)

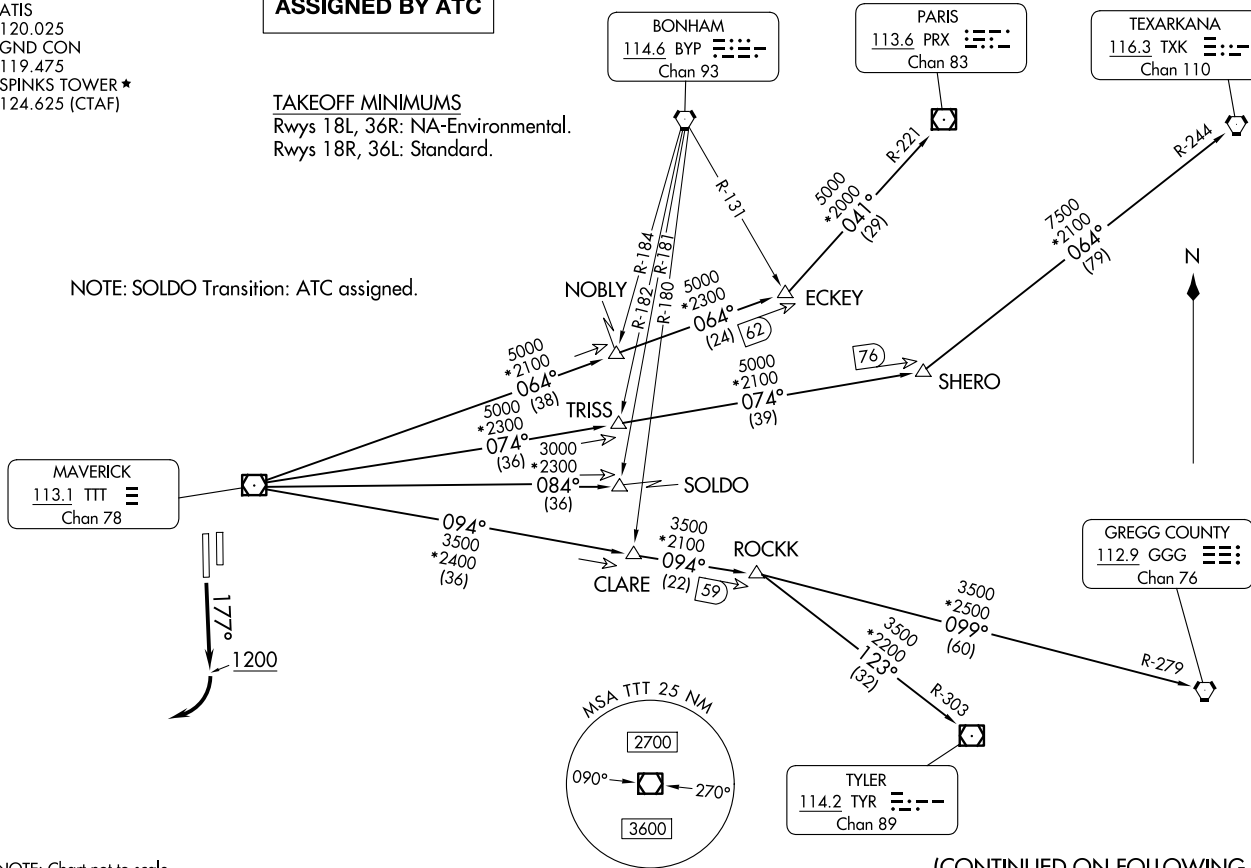
LONE STAR DEP CON  
135.975 379.9  
ATIS  
120.025  
GND CON  
119.475  
SPINKS TOWER \*  
124.625 (CTAF)

**TOP ALTITUDE:  
ASSIGNED BY ATC**

**TAKEOFF MINIMUMS**  
Rwys 18L, 36R: NA-Environmental.  
Rwys 18R, 36L: Standard.

NOTE: SOLDO Transition: ATC assigned.

**RADAR and DME required.**



NOTE: Chart not to scale.

(CONTINUED ON FOLLOWING PAGE)

(GARL6.TT) 25107  
GARLAND SIX DEPARTURE

AL-6917 (FAA)  
FORT WORTH SPINKS (F'WS)  
FORT WORTH, TEXAS

# GARLAND SIX DEPARTURE



## DEPARTURE ROUTE DESCRIPTION

TAKEOFF RUNWAY 18R: Climb on heading 177° to 1200 before turning right.

When entering controlled airspace, fly assigned heading for RADAR vectors to appropriate route. Maintain ATC assigned altitude.

GREGG COUNTY TRANSITION (GARL6.GGG): From over TTT VOR/DME on TTT R-094 to ROCKK, then on GGG R-279 to GGG VORTAC.

PARIS TRANSITION (GARL6.PRX): From over TTT VOR/DME on TTT R-064 to ECKEY, then on PRX R-221 to PRX VOR/DME.

SOLDO TRANSITION (GARL6.SOLDO): From over TTT VOR/DME on TTT R-084 to SOLDO.

TEXARKANA TRANSITION (GARL6.TXK): From over TTT VOR/DME on TTT R-074 to SHERO, then on TXK R-244 to TXK VORTAC.

TYLER TRANSITION (GARL6.TYR): From over TTT VOR/DME on TTT R-094 to ROCKK, then on TYR R-303 to TYR VOR/DME.

SC-2, 16 APR 2026 to 14 MAY 2026

SC-2, 16 APR 2026 to 14 MAY 2026