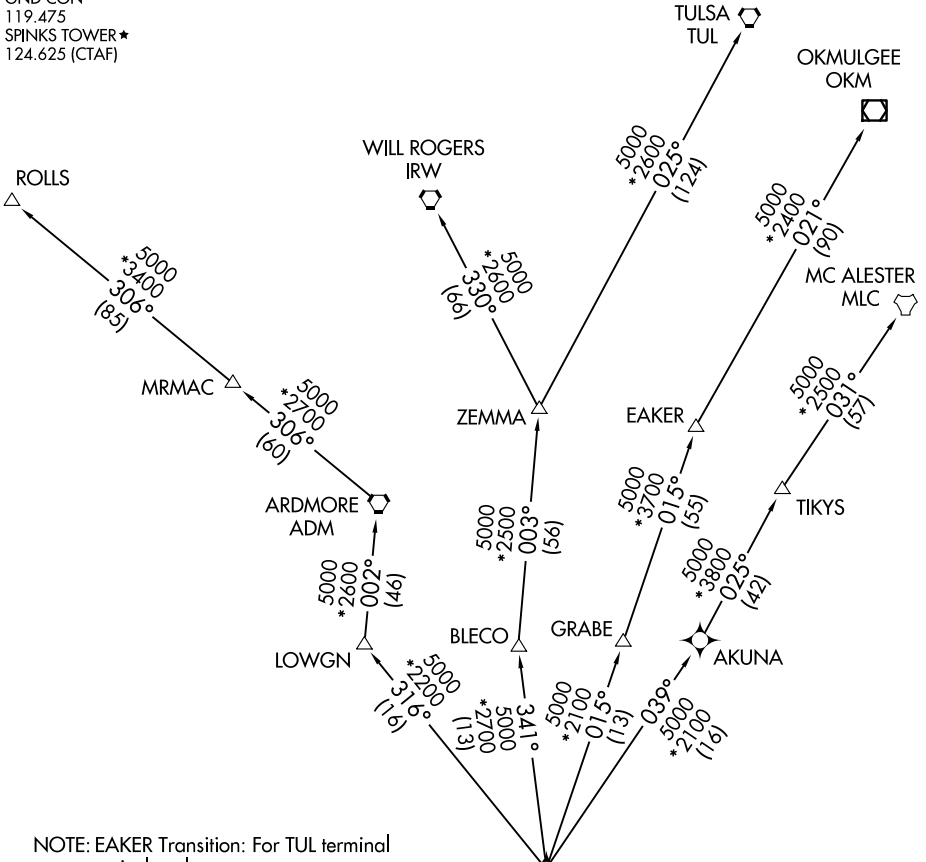


NANDR THREE DEPARTURE (RNAV)

LONE STAR DEP CON
135.975 379.9
ATIS
120.025
GND CON
119.475
SPINKS TOWER★
124.625 (CTAF)

RNAV 1 - DME/DME/IRU or GPS.
RADAR required.

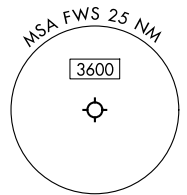
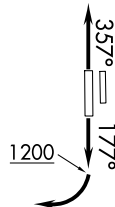
**TOP ALTITUDE:
ASSIGNED BY ATC**



NOTE: EAKER Transition: For TUL terminal arrivals only.
NOTE: TULSA Transition: For all aircraft overflying TUL VORTAC.
NOTE: Aircraft arriving to the Oklahoma City terminal area, file and expect the ZEMMA enroute transition.

TAKEOFF MINIMUMS

Rwys 18L, 36R: NA-Environmental.
Rwys 18R, 36L: Standard.



(CONTINUED ON FOLLOWING PAGE)

SC-2, 16 APR 2026 to 14 MAY 2026

SC-2, 16 APR 2026 to 14 MAY 2026



DEPARTURE ROUTE DESCRIPTION

TAKEOFF RUNWAY 18R: Climb on heading 177° to 1200 before turning right or as assigned by ATC, thence. . .

TAKEOFF RUNWAY 36L: Climb on heading 357° or as assigned by ATC, thence. . .

. . .expect RADAR vectors to cross CUZNO at or above 3000, then on track 357° to cross NANDR at or below 13000, then on assigned transition.

EAKER TRANSITION (NANDR3.EAKER)

MC ALESTER TRANSITION (NANDR3.MLC)

OKMULGEE TRANSITION (NANDR3.OKM)

ROLLS TRANSITION (NANDR3.ROLLS)

TULSA TRANSITION (NANDR3.TUL)

WILL ROGERS TRANSITION (NANDR3.IRW)

ZEMMA TRANSITION (NANDR3.ZEMMA)

SC-2, 16 APR 2026 to 14 MAY 2026

SC-2, 16 APR 2026 to 14 MAY 2026