

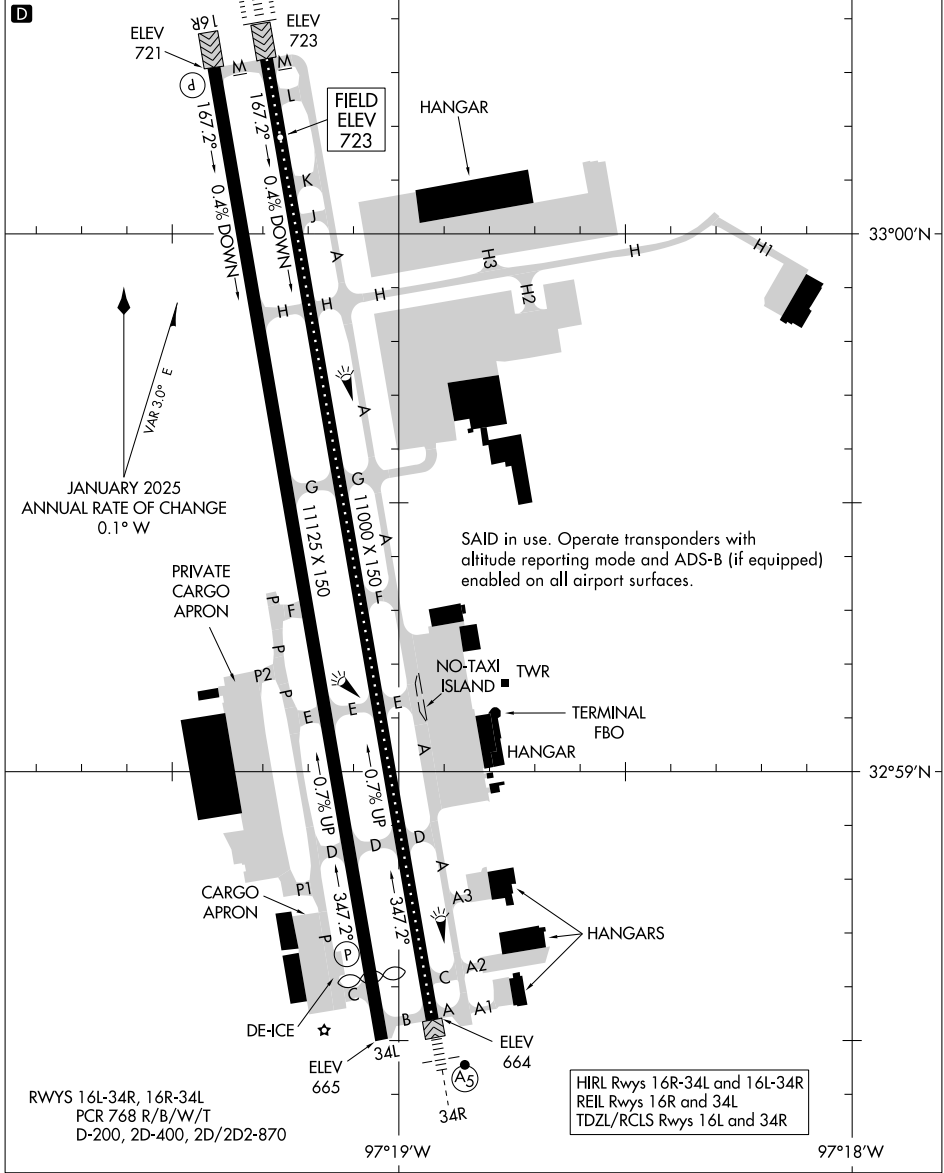
26022

# AIRPORT DIAGRAM

PEROT FLD/FORT WORTH ALLIANCE (A/FW)  
AL-6918 (FAA)  
FORT WORTH, TEXAS

ATIS  
126.925  
ALLIANCE TOWER  
120.825 (HELICOPTERS)  
135.15 257.9  
GND CON  
132.65 306.2  
CLNC DEL  
128.725

CAUTION: BE ALERT TO RUNWAY CROSSING CLEARANCES.  
READBACK OF ALL RUNWAY HOLDING INSTRUCTIONS IS REQUIRED.



JANUARY 2025  
ANNUAL RATE OF CHANGE  
0.1° W



SAID in use. Operate transponders with altitude reporting mode and ADS-B (if equipped) enabled on all airport surfaces.

RWYS 16L-34R, 16R-34L  
PCR 768 R/B/W/T  
D-200, 2D-400, 2D/2D2-870

HIRL Rwy's 16R-34L and 16L-34R  
REIL Rwy's 16R and 34L  
TDZL/RCLS Rwy's 16L and 34R

# AIRPORT DIAGRAM

26022

FORT WORTH, TEXAS  
PEROT FLD/FORT WORTH ALLIANCE (A/FW)

SC-2, 16 APR 2026 to 14 MAY 2026

SC-2, 16 APR 2026 to 14 MAY 2026