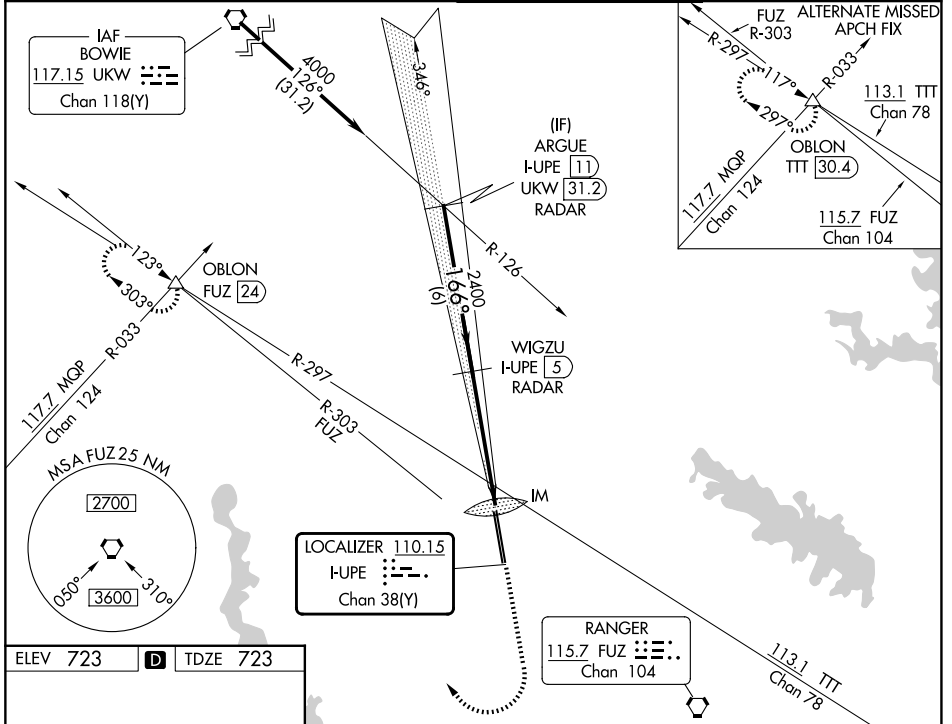


LOC/DME I-UIPE 110.15 Chan 38 (Y)	APP CRS 166°	Rwy Ldg 10600 TDZE 723 Apt Elev 723
---	------------------------	--

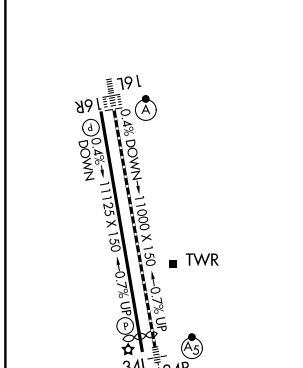
ILS RWY 16L (CAT II & III)
PEROT FLD/FORT WORTH ALLIANCE (AFW)

DME or RADAR required.		ALSIF-2	MISSED APPROACH: Climb to 1200 then climbing right turn to 3000 on heading 330° and FUZ VORTAC R-303 to OBLON INT/FUZ 24 DME and hold.
------------------------	--	---------	--

ATIS 126.925	LONE STAR APP CON 118.1 306.95	ALLIANCE TOWER 135.15 257.9	GND CON 132.65 306.2
------------------------	--	---------------------------------------	--------------------------------



ELEV 723	D	TDZE 723
----------	----------	----------



ARGUE I-UIPE 11 RADAR	WIGZU I-UIPE 5 RADAR	1200	3000	FUZ R-303	OBLON
4000		↑		hdg 330°	
GS 3.00°	2400	2400	IM	797	
6 NM		5.1 NM		1049'	
CATEGORY	A	B	C	D	
S-ILS 16L	CAT II RA 101/12		100 DA 823		
S-ILS 16L	CAT III		RVR 06		

CATEGORY II & III ILS - SPECIAL AIRCREW & AIRCRAFT CERTIFICATION REQUIRED

SC-2, 16 APR 2026 to 14 MAY 2026

SC-2, 16 APR 2026 to 14 MAY 2026