

WAAS CH <b>99338</b> <b>W16A</b>	APP CRS <b>166°</b>	Rwy Ldg <b>10410</b> TDZE <b>721</b> Apt Elev <b>723</b>
--	------------------------	--

# RNAV (GPS) RWY 16R

PEROT FLD/FORT WORTH ALLIANCE (AFW)

RNP APCH-GPS.

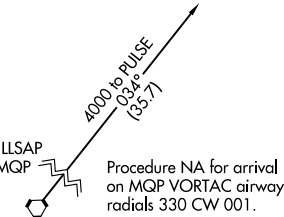
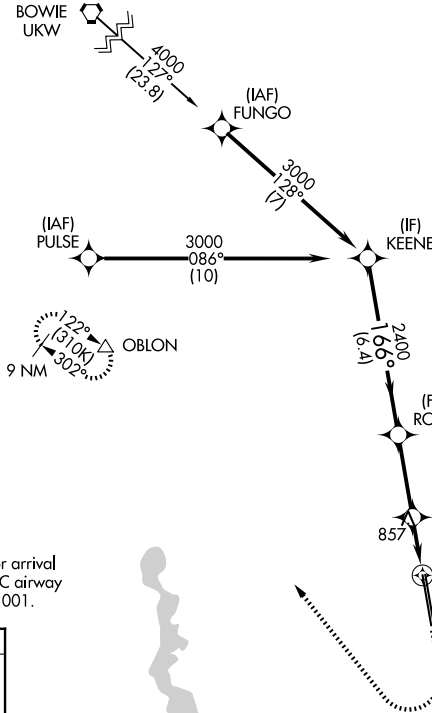
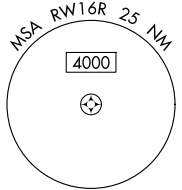
**▼** For uncompensated Baro-VNAV systems, LNAV/VNAV NA below -9°C or above 54°C. Circling NA east of Rwy 16L-34R.

MISSED APPROACH: Climb to 1200 then climbing right turn to 3000 direct OBLON and hold.

ATIS <b>126.925</b>	LONE STAR APP CON <b>118.1 306.95</b>	ALLIANCE TOWER <b>135.15 257.9</b>	GND CON <b>132.65 306.2</b>
------------------------	--	---------------------------------------	--------------------------------

Procedure NA for arrival on UKW VORTAC airway radials 065 CW 184.

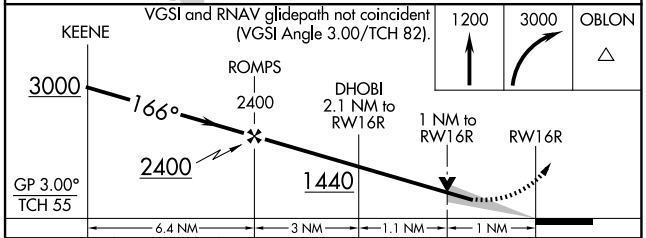
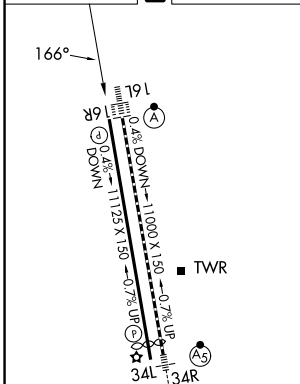
BOWIE UKW



SC-2, 16 APR 2026 to 14 MAY 2026

SC-2, 16 APR 2026 to 14 MAY 2026

ELEV 723	<b>D</b>	TDZE 721
----------	----------	----------



CATEGORY	A	B	C	D	E
LPV DA		921-1	200 (200-1)		
LNAV/VNAV DA		1017-1	296 (300-1)		
LNAV MDA	1120-1	399 (400-1)	1120-1½	399 (400-1½)	
CIRCLING	1200-1 477 (500-1)	1320-1 597 (600-1)	1360-1¾ 637 (700-1¾)	1380-2 657 (700-2)	1380-2½ 657 (700-2½)

TDZ/CL Rws 16L and 34R  
HIRL Rwy 16L-34R and 16R-34L  
REIL Rws 16R and 34L

# RNAV (GPS) RWY 16R