

WAAS CH 45922 W18A	APP CRS 175°	Rwy Ldg TDZE Apt Elev	4001 532 532
--	------------------------	-----------------------------	---

RNAV (GPS) RWY 18

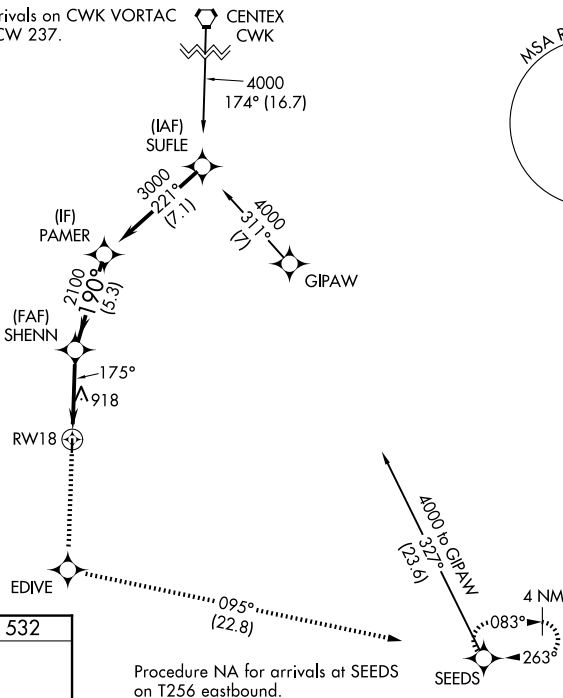
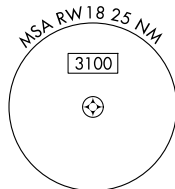
LOCKHART MUNI (50R)

RNP APCH.	<p>Baro-VNAV NA. Use San Marcos altimeter setting, when not received, use Austin-Bergstrom Intl altimeter setting and increase all DA 16 feet, all MDA 20 feet; increase LNAV Cat B visibility ¼ SM.</p>	<p>MISSED APPROACH: Climb to 4000 direct EDIVE and on track 095° to SEEDS and hold.</p>
-----------	--	---

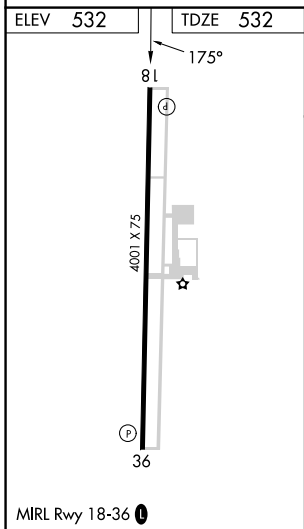
<p>AUSTIN APP CON 120.875 270.25</p>	<p>UNICOM 122.8 (CTAF) 0</p>
---	---

Procedure NA for arrivals on CWK VORTAC airway radials 088 CW 237.

CENTEX CWK



Procedure NA for arrivals at SEEDS on T256 eastbound.



4000	EDIVE	tr 095°	SEEDS	VGSI and RNAV glidepath not coincident (VGSI Angle 3.50/TCH 24).
↑	✧		✧	
SHENN 2100		PAMER 3000		GP 3.00° TCH 40
RWY 18		2100		
4.8 NM		5.3 NM		
ANGLE	175°	190°		
CATEGORY	A	B	C	D
LPV DA	815-1 283 (300-1)			NA
LNAV/VNAV DA	883-1¼ 351 (400-1¼)			NA
LNAV MDA	1260-1 728 (800-1)	1260-2 728 (800-2)		NA

SC-3, 16 APR 2026 to 14 MAY 2026

SC-3, 16 APR 2026 to 14 MAY 2026