

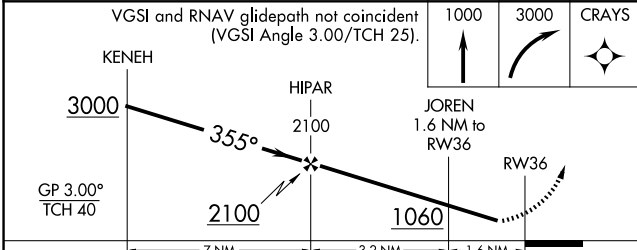
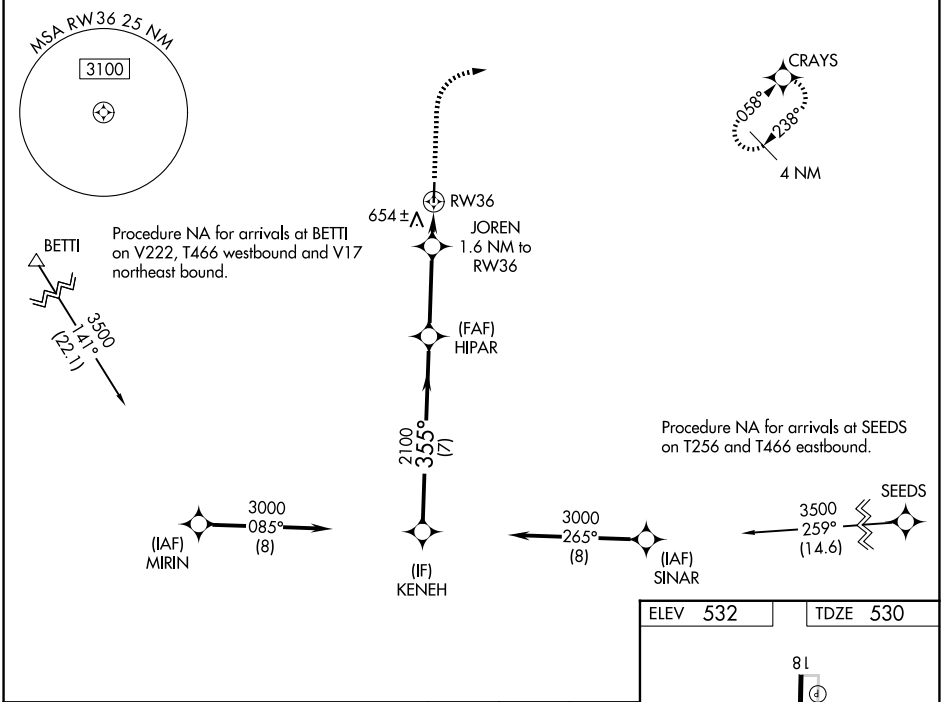
WAAS CH <b>53323</b> <b>W36A</b>	APP CRS <b>355°</b>	Rwy Ldg TDZE Apt Elev	<b>4001</b> <b>530</b> <b>532</b>
----------------------------------------	------------------------	-----------------------------	-----------------------------------------

# RNAV (GPS) RWY 36

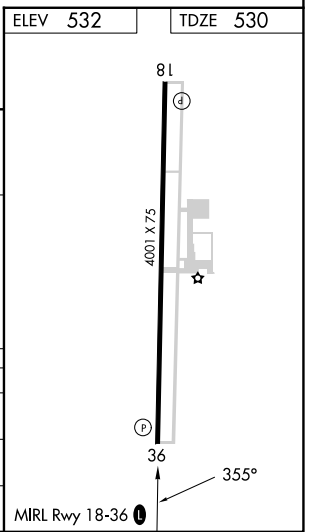
LOCKHART MUNI (50R)

RNP APCH - GPS.		MISSED APPROACH: Climb to 1000, then climbing right turn to 3000 direct CRAYS and hold.
<p><b>⚠</b> Rwy 36 helicopter visibility reduction below <math>\frac{3}{4}</math> NA. Baro-VNAV NA. Use San Marcos altimeter setting; when not received, use Austin-Bergstrom Intl altimeter setting; increase LPV DA to 830 feet; increase LNAV/VNAV DA to 880 feet; increase all MDAs 20 feet and visibility Cat C <math>\frac{1}{8}</math> SM.</p>		

AUSTIN APP CON <b>120.875 270.25</b>	UNICOM <b>122.8 (CTAF) 0</b>
-----------------------------------------	---------------------------------



CATEGORY	A	B	C	D
LPV DA	813-1 283 (300-1)			NA
LNAV/VNAV DA	863-1 $\frac{1}{8}$ 333 (400-1 $\frac{1}{8}$ )			NA
LNAV MDA	940-1 410 (500-1)		940-1 $\frac{1}{8}$ 410 (500-1 $\frac{1}{8}$ )	NA



SC-3, 16 APR 2026 to 14 MAY 2026

SC-3, 16 APR 2026 to 14 MAY 2026