

WAAS CH 50619 W09F	APP CRS 096°	Rwy Ldg TDZE Apt Elev	6911 9037 9070
--	------------------------	-----------------------------	---

RNAV (GPS) X RWY 9

TELLURIDE RGNL (TEX)

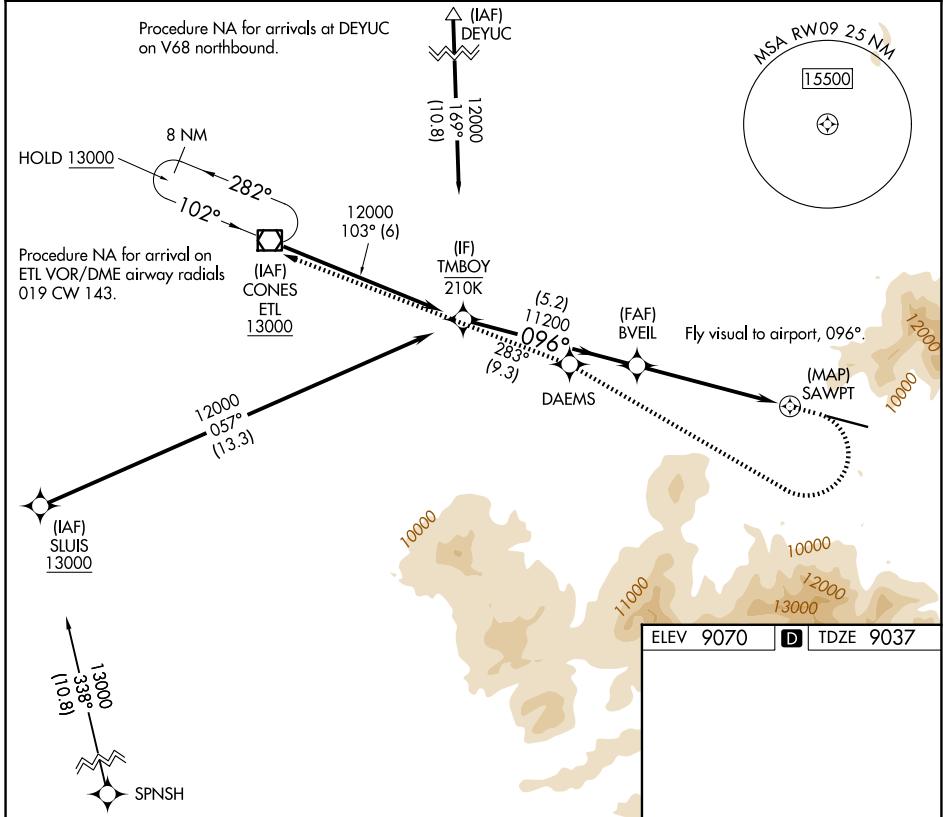
RNP APCH - GPS.

When local altimeter setting not received, procedure NA.

NA
-17°C

MISSED APPROACH: (Do not exceed 165K until DAEMS) Climb to 10440 then climbing right turn to 15000 direct DAEMS and track 283° to ETL VOR/DME and hold.
*Missed approach requires minimum climb of 355 feet per NM to 12400; if unable to meet climb gradient, see RNAV (GPS) Y RWY 9.

AWOS-3 118.325	DENVER CENTER 125.35 354.05	UNICOM 123.0 (CTAF) 0
--------------------------	---------------------------------------	---------------------------------



TMBOY	10440	15000	DAEMS	ETL
12000	↑	↘	✦	◻
GP 3.50° TCH 46	Fly visual to airport, 096°.			
11200	BVEIL	11200	SAWPT	
5.2 NM		4.6 NM	1.1 NM	
CATEGORY	A	B	C	D
LPV DA*	10152-3 1115 (1100-3)			NA

ELEV 9070 **D** TDZE 9037

HIRL Rwy 9-27 0

REIL Rws 9 and 27 0

SW-1, 16 APR 2026 to 14 MAY 2026

SW-1, 16 APR 2026 to 14 MAY 2026