

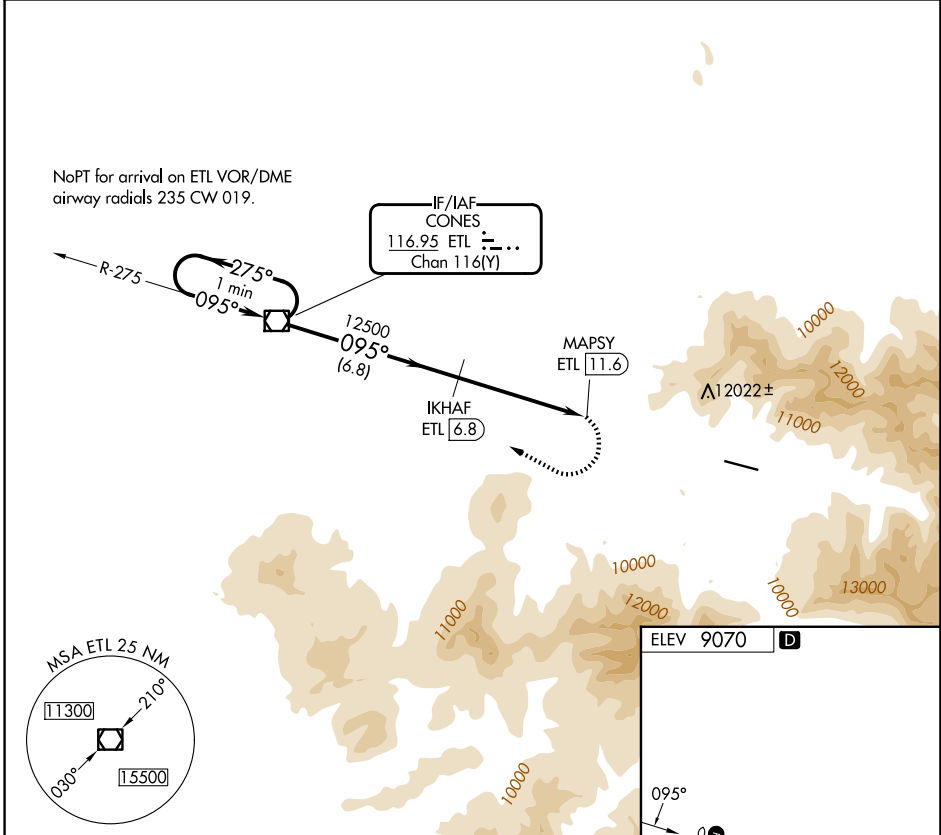
VOR/DME ETL 116.95 Chan 116(Y)	APP CRS 095°	Rwy Ldg TDZE Apt Elev N/A N/A 9070
--	------------------------	---

VOR/DME-A

TELLURIDE RGNL (TEX)

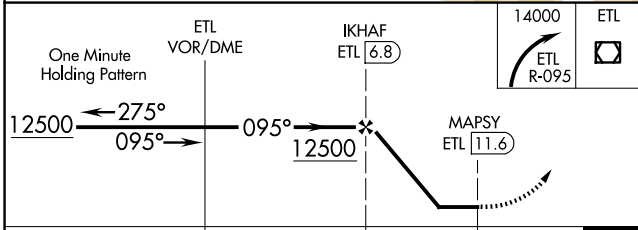
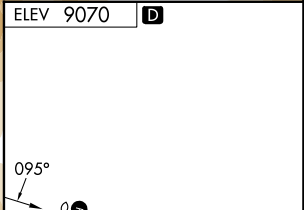
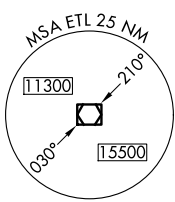
	Circling NA north of Rwy 9-27. Procedure NA at night.	MISSED APPROACH: Immediate climbing right turn to 14000 via ETL VOR/DME R-095 to ETL VOR/DME and hold.
--	--	---

AWOS-3 118.325	DENVER CENTER 125.35 354.05	UNICOM 123.0 (CTAF) 1
--------------------------	---------------------------------------	---------------------------------



SW-1, 16 APR 2026 to 14 MAY 2026

SW-1, 16 APR 2026 to 14 MAY 2026



CATEGORY	A	B	C	D
CIRCLING	12420-6	3350 (3400-6)	NA	NA

ELEV 9070	D
HIRL Rwy 9-27	1
REIL Rwys 9 and 27	1