

APP CRS	Rwy Idg	3900
339°	TDZE	2160
	Apt Elev	2160

RNAV (GPS) RWY 34

PIONEER VILLAGE FLD (ØV3)

RNP APCH - GPS.

▽ Rwy 34 helicopter visibility reduction below 1 SM NA. Use EAR altimeter setting; when not received, use HDE altimeter setting and increase all MDAs 40 feet. Procedure NA at night.

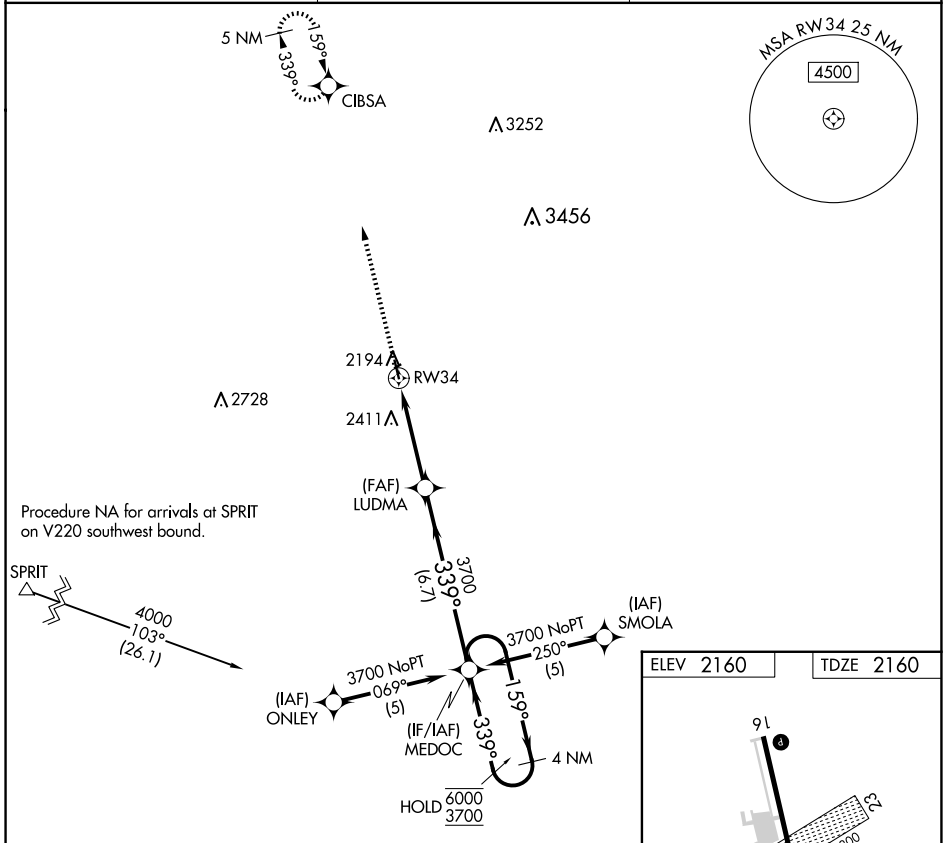
▲ NA

MISSED APPROACH: Climb to 4300 direct CIBSA and hold.

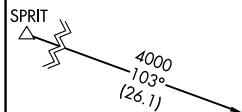
EAR AWOS-3PT
123.875

MINNEAPOLIS CENTER
119.4 278.8

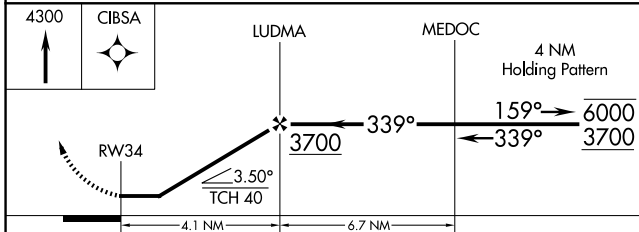
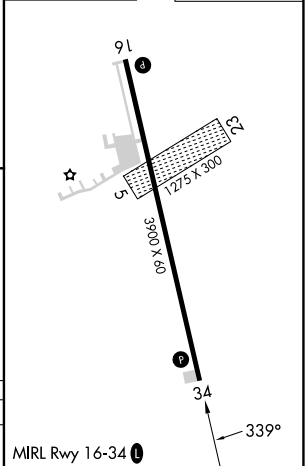
UNICOM
122.7 (CTAF) 0



Procedure NA for arrivals at SPRIT on V220 southwest bound.



ELEV 2160	TDZE 2160
-----------	-----------



CATEGORY	A	B	C	D
LNAV MDA	2700-1	540 (600-1)		NA

NC-2, 16 APR 2026 to 14 MAY 2026

NC-2, 16 APR 2026 to 14 MAY 2026