

WAAS CH 99419 W01A	APP CRS 014°	Rwy Ldg TDZE Apt Elev	5507 495 497
--	------------------------	-----------------------------	---

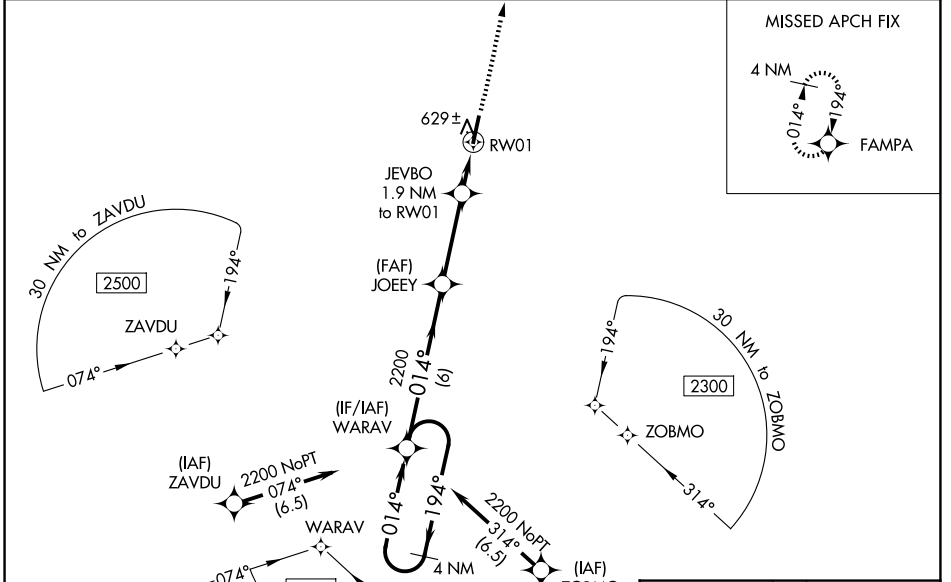
RNAV (GPS) RWY 1

SGT LEE RUSSELL CARROLL COUNTY (HZD)

⚠ For uncompensated Baro-VNAV systems, LNAV/VNAV NA below -15°C (5°F) or above 54°C (130°F). DME/DME RNP-0.3 NA. When local altimeter setting not received, use Jackson Rgnl altimeter setting and increase all DA 94 feet and all MDA 100 feet; increase LPV all Cats visibility ¼ mile, LNAV/VNAV all Cats visibility ⅓ mile, LNAV Cats C and D visibility ¼ mile, and Circling Cats C and D visibility ½ mile. VDP and Baro-VNAV NA with Jackson Rgnl altimeter setting. Helicopter visibility reduction below ¾ SM NA.

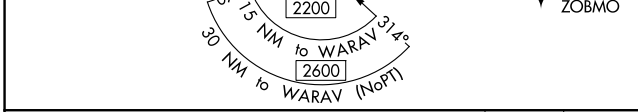
MISSED APPROACH: Climb to 2200 direct FAMP A and hold.

AWOS-3 133.275	MEMPHIS CENTER 134.65 316.15	UNICOM 122.8 (CTAF)
--------------------------	--	-------------------------------

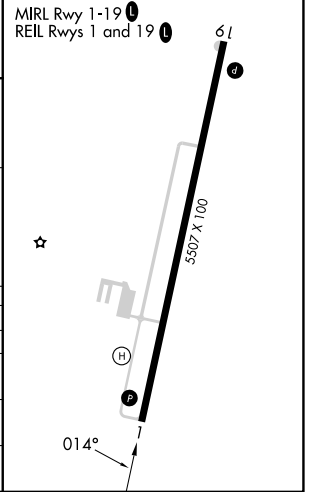


SE-1, 16 APR 2026 to 14 MAY 2026

SE-1, 16 APR 2026 to 14 MAY 2026



ELEV 497	TDZE 495
----------	----------



4 NM Holding Pattern	WARAV	JOEY	JEVBO	2200	FAMP A
GP 3.00° TCH 40	← 194°	014° →	← 194°	← 194°	← 194°
	6 NM	3.3 NM	0.8 NM	1.1 NM	

CATEGORY	A	B	C	D
LPV DA		745-7/8	250 (300-7/8)	
LNAV/VNAV DA		810-1	315 (400-1)	
LNAV MDA	880-1	385 (400-1)	880-1 1/8	385 (400-1 1/8)
CIRCLING	980-1	483 (500-1)	1220-2 723 (800-2)	1220-2 1/4 723 (800-2 1/4)

RNAV (GPS) RWY 1