

WAAS CH 97634 W19A	APP CRS 194°	Rwy Ldg TDZE Apt Elev	5507 497 497
--	------------------------	-----------------------------	---

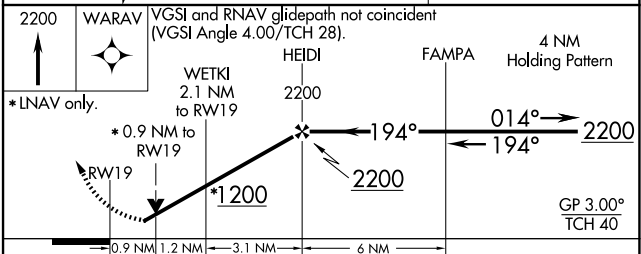
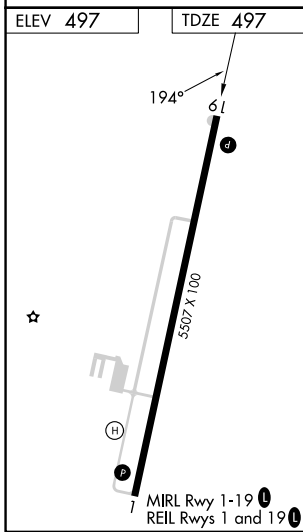
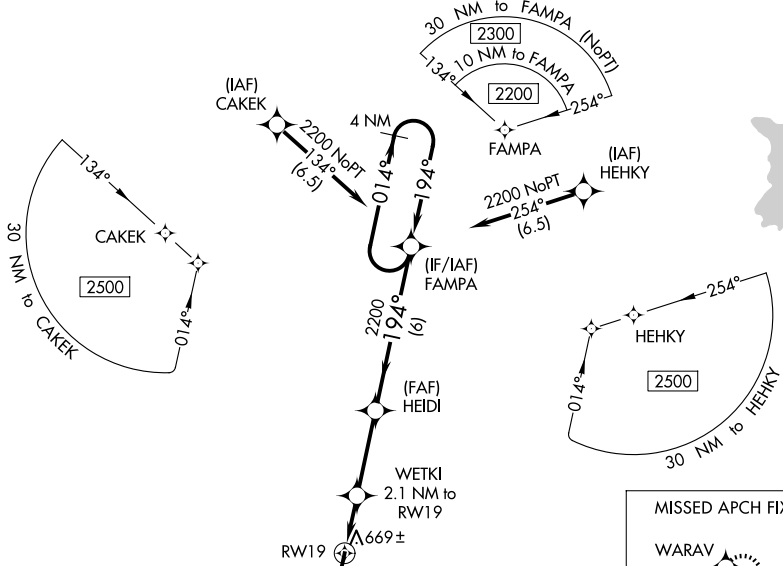
RNAV (GPS) RWY 19

SGT LEE RUSSELL CARROLL COUNTY (HZD)

NA For uncompensated Baro-VNAV systems, LNAV/VNAV NA below -15°C (5°F) or above 54°C (130°F). DME/DME RNP-0.3 NA. When local altimeter setting not received, use Jackson Rgnl altimeter setting and increase all DA 94 feet and all MDA 100 feet; increase LPV all Cats and LNAV/VNAV all Cats visibility 3/8 mile, LNAV Cats C and D visibility 1/4 mile, and Circling Cats C and D visibility 1/2 mile. VDP and Baro-VNAV NA with Jackson Rgnl altimeter setting. Helicopter visibility reduction below 3/4 SM NA.

MISSED APPROACH:
Climb to 2200 direct
WARAV and hold.

AWOS-3 133.275	MEMPHIS CENTER 134.65 316.15	UNICOM 122.8 (CTAF)
--------------------------	--	-------------------------------



CATEGORY	A	B	C	D
LPV DA	798-1		301 (400-1)	
LNAV/VNAV DA	933-1½		436 (500-1½)	
LNAV MDA	920-1	423 (500-1)	920-1¼	423 (500-1¼)
CIRCLING	980-1	483 (500-1)	1220-2 723 (800-2)	1220-2¼ 723 (800-2¼)

SE-1, 16 APR 2026 to 14 MAY 2026

SE-1, 16 APR 2026 to 14 MAY 2026