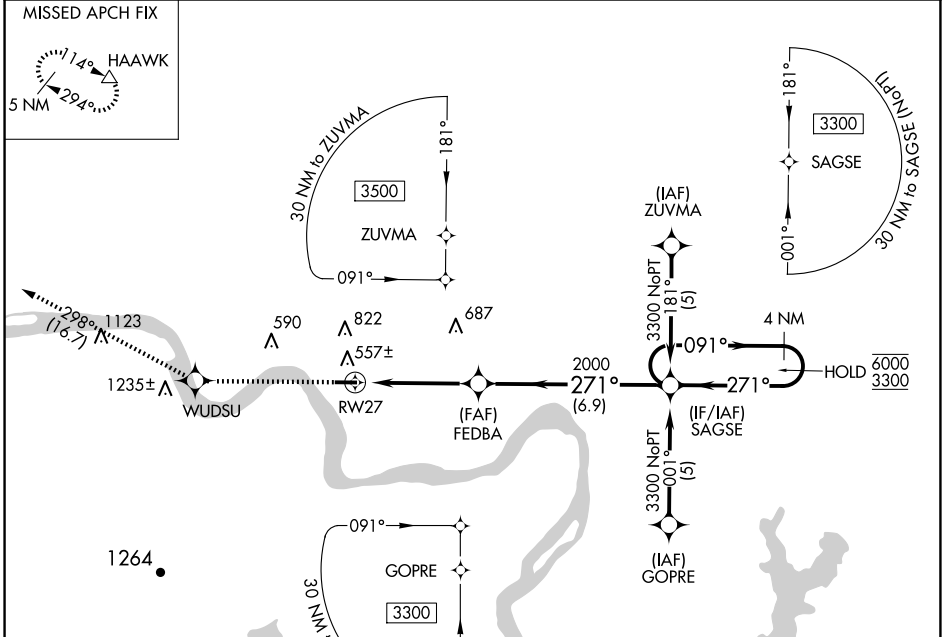


APP CRS **271°** Rwy Idg **3998**
 TDZE **320**
 Apt Elev **321**

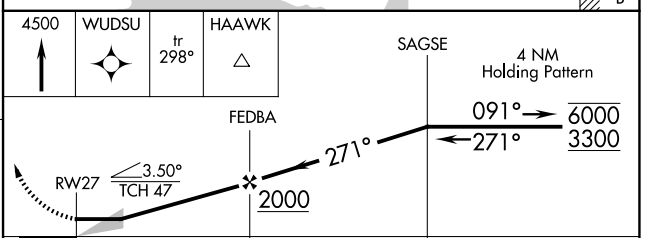
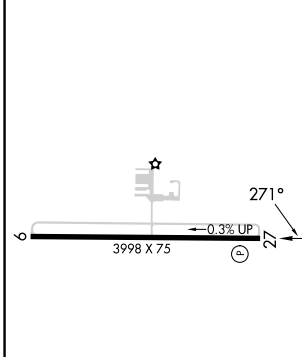
RNAV (GPS) RWY 27

MORRILTON MUNI (BDQ)

RNP APCH - GPS.		MISSED APPROACH: Climb to 4500 direct WUDSU and on track 298° to HAAWK and hold.	
Use RUE altimeter setting; when not received, use LIT altimeter setting and increase all MDAs 40 feet and LNAV visibility Cat B 1/4 SM, and Circling Cat B visibility 1/4 SM.			
RUE AWOS 132.475	MEMPHIS CENTER 128.475 377.15	UNICOM 122.8 (CTAF)	122.9



ELEV 321 TDZE 320



CATEGORY	A	B	C	D
LNAV MDA	1060-1	740 (800-1)	NA	
CIRCLING	1060-1 739 (800-1)	1260-1 1/4 939 (1000-1 1/4)	NA	

SC-1, 16 APR 2026 to 14 MAY 2026

SC-1, 16 APR 2026 to 14 MAY 2026