

APP CRS	Rwy Ldg	6101
181°	TDZE	5024
	Apt Elev	5024

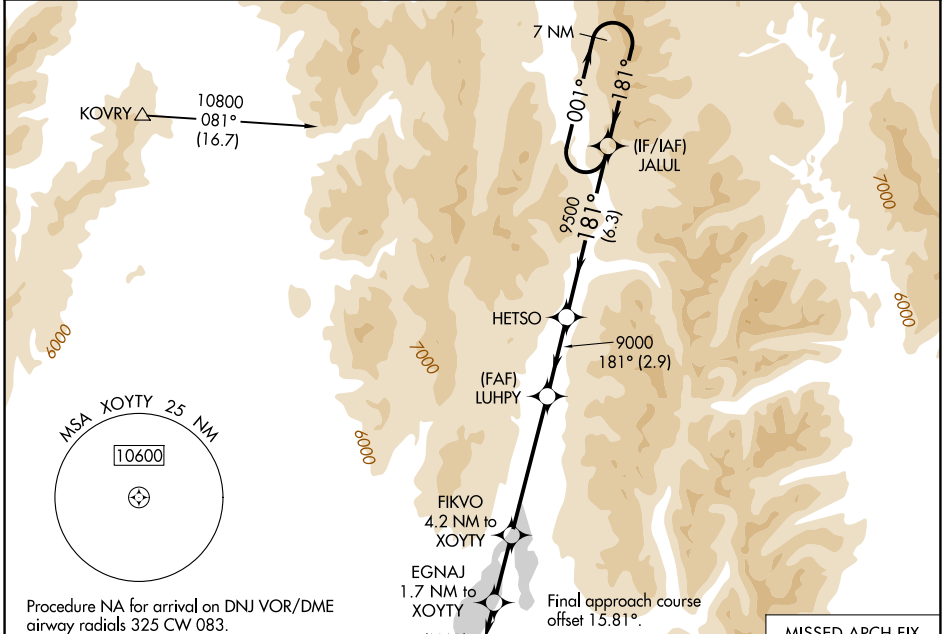
RNAV (GPS) RWY 16

MC CALL MUNI (MYL)

⚠ Rwy 16 helicopter visibility reduction below 1 SM NA.
⚠ DME/DME RNP-0.3 NA.
⚠ -19°C Straight-in Rwy 16 NA at night, Circling Rwy 16 NA at night.

MISSED APPROACH: Climb to 11700 direct UDABE and on track 158° to PEPUC and hold, continue climb-in-hold to 11700.

ASOS 119.925	SALT LAKE CENTER 128.05 306.95	UNICOM 122.8 (CTAF)
------------------------	--	-------------------------------



ELEV 5024 TDZE 5024

181°

91

6101 X 75

0.3% UP

34

MIRL Rwy 16-34

REIL Rws 16 and 34

11700 UDABE	tr 158°	PEPUC	Visual Segment - Obstacles.	JALUL	7 NM Holding Pattern
XOYTY	EGNAJ 1.7 NM to XOYTY	FIKVO 4.2 NM to XOYTY	LUHPY	HETSO	9500
5940	6940	9000	9500	10800	
0.5	1.7	2.5 NM	5.1 NM	2.9 NM	6.3 NM
CATEGORY	A	B	C	D	
LNAV MDA	5520-1	496 (500-1)	5520-1 $\frac{3}{8}$ 496 (500-1 $\frac{3}{8}$)	NA	
CIRCLING	5940-1 $\frac{1}{4}$	916 (1000-1 $\frac{1}{4}$)	6140-3 1116 (1200-3)	NA	

NW-1, 16 APR 2026 to 14 MAY 2026

NW-1, 16 APR 2026 to 14 MAY 2026