

| | | | |
|--|------------------------|-----------------------------|---|
| WAAS CH 69419 W13A | APP CRS 136° | Rwy Idg TDZE Apt Elev | 4002 1140 1140 |
|--|------------------------|-----------------------------|---|

RNAV (GPS) RWY 13

LITCHFIELD MUNI (LJF)

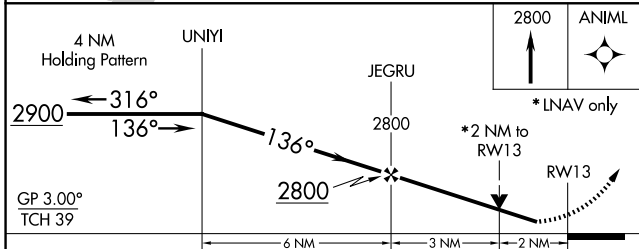
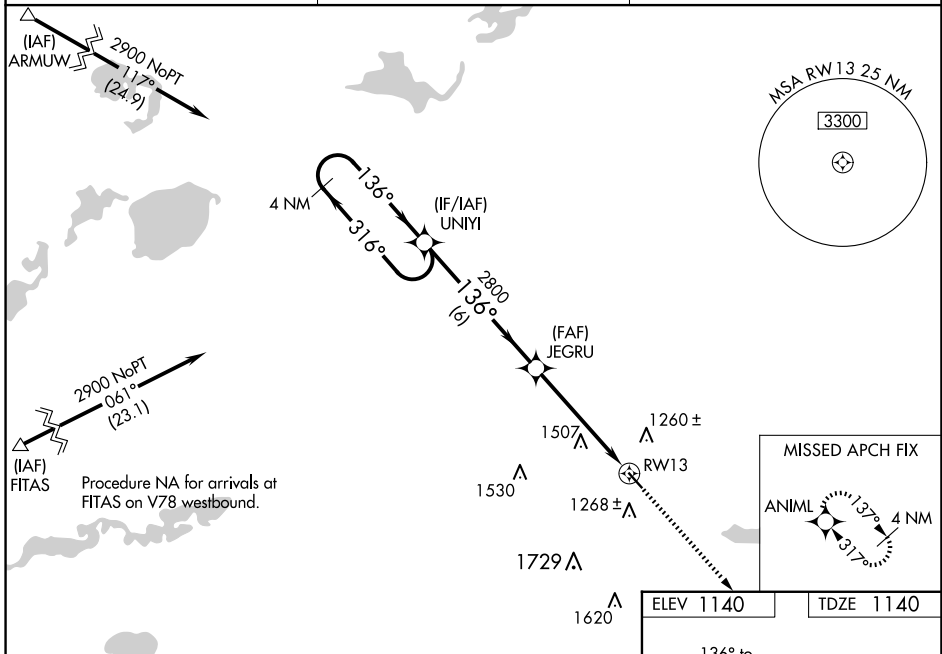
RNP APCH - GPS.

▽ Baro-VNAV NA when using Hutchinson altimeter setting. For uncompensated Baro-VNAV systems, LNAV/VNAV NA below -17°C or above 54° C. Visibility reduction by helicopters

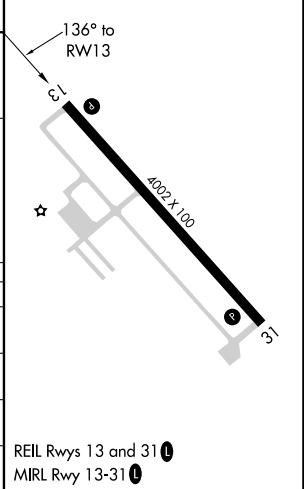
▲ NA. When local altimeter setting not received, use Hutchinson altimeter setting: increase LPV DA to 1436 feet; increase LNAV/VNAV DA to 1980 feet and visibility all Cats ¼ SM; increase all MDA 60 feet and Circling Cat C visibility ¼ SM. VDP NA with Hutchinson altimeter setting.

MISSED APPROACH:
Climb to 2800 direct ANIML and hold.

| | | |
|-------------------------|--|------------------------|
| AWOS-3 119.65 | MINNEAPOLIS CENTER 125.5 323.1 | CTAF 122.9 0 |
|-------------------------|--|------------------------|



| | |
|-----------|-----------|
| ELEV 1140 | TDZE 1140 |
|-----------|-----------|



| CATEGORY | A | B | C | D |
|--------------|----------------------|--------------------|----------------------|---|
| LPV DA | 1390-1 250 (300-1) | | | |
| LNAV/VNAV DA | 1934-2¾ 794 (800-2¾) | | | |
| LNAV MDA | 1820-1 680 (700-1) | 1820-2 680 (700-2) | 1820-2¼ 680 (700-2¼) | |
| CIRCLING | 1820-1 680 (700-1) | 1860-2 720 (800-2) | 2080-3 940 (1000-3) | |

REIL Rwy 13 and 31
MIRL Rwy 13-31

NC-1, 16 APR 2026 to 14 MAY 2026

NC-1, 16 APR 2026 to 14 MAY 2026