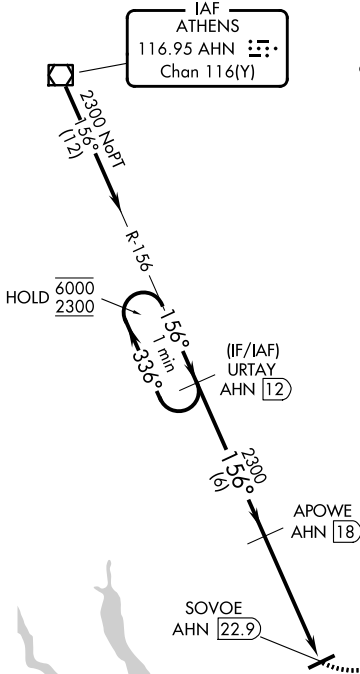


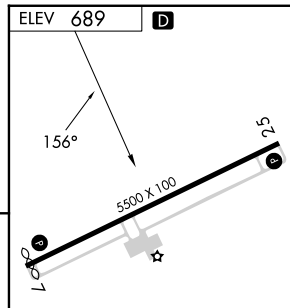
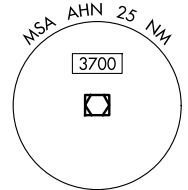
VOR/DME AHN 116.95 Chan 116 (Y)	APP CRS 156°	Rwy Ldg TDZE Apt Elev 689	N/A N/A 689
---	------------------------	---	--

VOR-B
GREENE COUNTY RGNL (CPP)

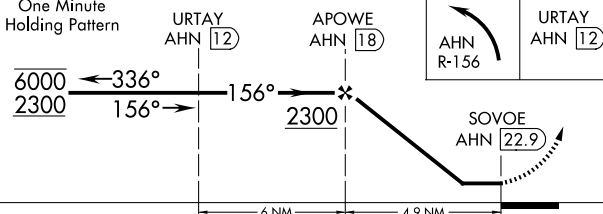
DME Required.		MISSED APPROACH: Climbing left turn to 2300 on AHN VOR/DME R-156 to URTAY/AHN 12 DME and hold.	
AWOS-3 124.525	ATLANTA APP CON * 132.475 291.1	GCO 121.725	UNICOM 122.8 (CTAF)



Procedure NA for arrival on AHN VOR/DME airway radials 104 CW 195.



One Minute Holding Pattern



CATEGORY	A	B	C	D
CIRCLING	1240-1	551 (600-1)	1320-1¾ 631 (700-1¾)	1480-2½ 791 (800-2½)

HIRL Rwy 7-25

SE-4, 16 APR 2026 to 14 MAY 2026

SE-4, 16 APR 2026 to 14 MAY 2026