

WAAS CH 73031 W17A	APP CRS 166°	Rwy Ldg TDZE Apt Elev	6102 4297 4322
--	------------------------	-----------------------------	---

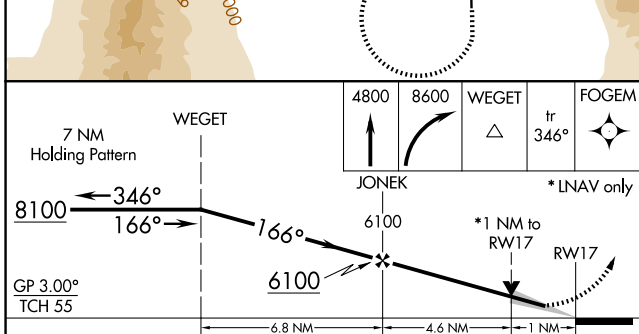
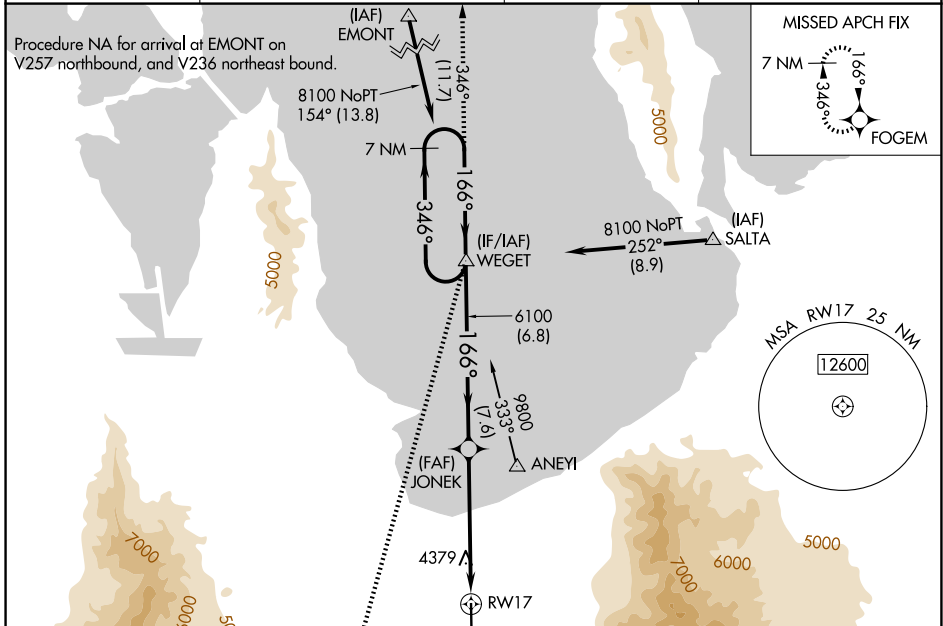
RNAV (GPS) RWY 17

BOLINDER FLD/TOOELE VALLEY (TVY)

⚠ For uncompensated Baro-VNAV systems, LNAV/VNAV NA below -23°C (-9°F) or above 49°C (120°F). DME/DME RNP-0.3 NA. For inop ALS, increase LNAV/VNAV all Cats visibility to ¾ SM, increase LNAV Cat C/D visibility to 1 SM.

MALSR
A5
MISSED APPROACH: Climb to 4800 then climbing right turn to 8600 direct WEGET and track 346° to FOGEM and hold.

AWOS-3PT 119.725	SALT LAKE CITY APP CON 135.5 316.15	CLNC DEL 124.4	UNICOM 123.0 (CTAF)
----------------------------	---	--------------------------	-------------------------------



ELEV 4322	D TDZE 4297
CATEGORY	A B C D
LPV DA	4497-½ 200 (200-½)
LNAV/VNAV DA	4547-½ 250 (300-½)
LNAV MDA	4640-½ 343 (400-½) 4640-⅝ 343 (400-⅝)
CIRCLING	4820-1 498 (500-1) 4900-1 578 (600-1) 5060-2 738 (800-2) 5380-3 1058 (1100-3)
REIL Rwy 35 Ⓛ MIRL Rwy 17-35	

SW-4, 16 APR 2026 to 14 MAY 2026

SW-4, 16 APR 2026 to 14 MAY 2026