

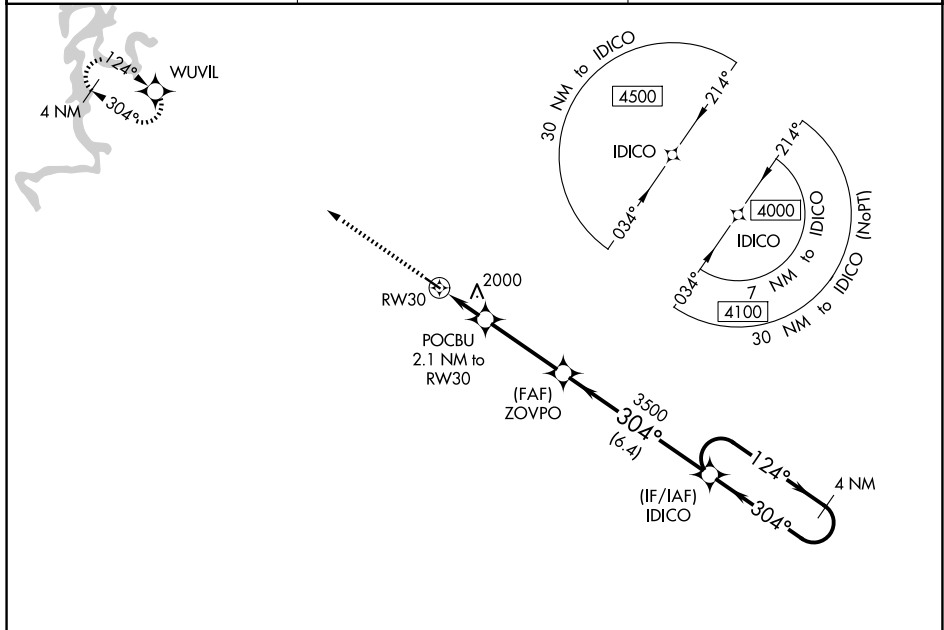
WAAS CH <b>40231</b> <b>W30A</b>	APP CRS <b>304°</b>	Rwy Ldg TDZE Apt Elev	<b>3601</b> <b>1748</b> <b>1748</b>
--	------------------------	-----------------------------	---

# RNAV (GPS) RWY 30

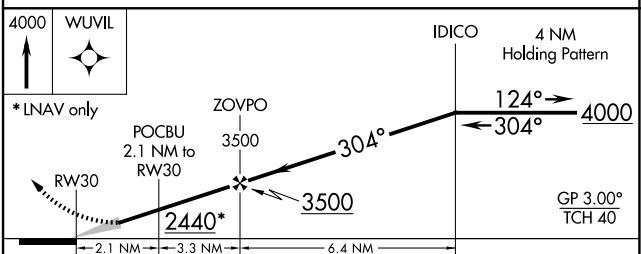
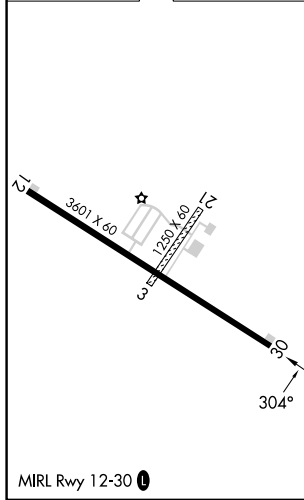
HUNTSVILLE MUNI (H34)

RNP APCH - GPS.	<p>Baro-VNAV NA. Use Springdale altimeter setting; when not received, use Drake Fld altimeter setting and increase all DA 18 feet and all MDA 20 feet; increase LNAV/VNAV all Cats visibility ¼ mile. Circling NA to Rwy 3 and 21.</p>	<p>MISSED APPROACH: Climb to 4000 direct WUVIL and hold.</p>
-----------------	--	--

ASG AWOS-3 <b>124.675</b>	RAZORBACK APP CON * <b>126.6 305.2</b>	UNICOM <b>122.8 (CTAF) 0</b>
------------------------------	---	---------------------------------



ELEV 1748	TDZE 1748
-----------	-----------



CATEGORY	A	B	C	D
LPV DA	2047-1 299 (300-1)			NA
LNAV/VNAV DA	2410-2¼ 662 (700-2¼)			NA
LNAV MDA	2360-1	612 (700-1)	2360-1¾ 612 (700-1¾)	NA
CIRCLING	2360-1 612 (700-1)	2520-1 772 (800-1)	2520-2¼ 772 (800-2¼)	NA

SC-1, 16 APR 2026 to 14 MAY 2026

SC-1, 16 APR 2026 to 14 MAY 2026