

WAAS CH 65923 W23A	APP CRS 227°	Rwy Ldg TDZE 1219 Apt Elev 1220
--	------------------------	---

RNAV (GPS) RWY 23

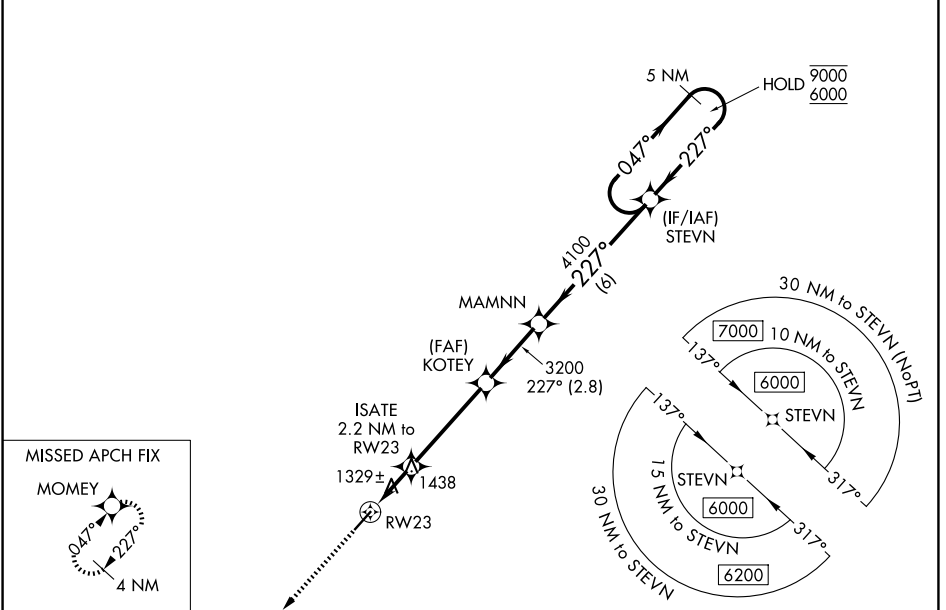
CHEROKEE COUNTY RGNL (CNI)

RNP APCH - GPS.

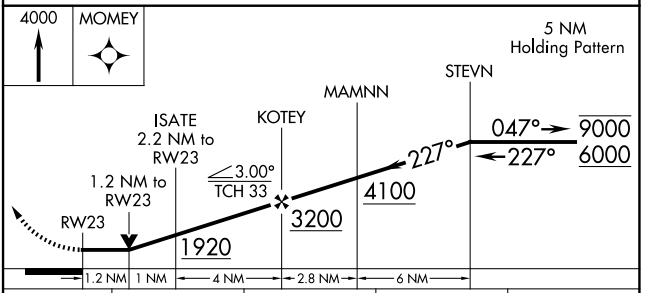
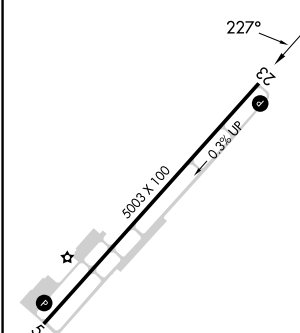
MISSED APPROACH: Climb to 4000 direct MOMY and hold, continue climb-in-hold to 4000.

Rwy 23 helicopter visibility reduction below 3/4 SM NA.

AWOS-3PT 119,825	ATLANTA APP CON 121.0 268.7	UNICOM 123.0 (CTAF) 0
----------------------------	---------------------------------------	---------------------------------



ELEV 1220	TDZE 1219
-----------	-----------



CATEGORY	A	B	C	D
LP MDA	1600-1	381 (400-1)	1600-1 1/8 381 (400-1 1/8)	NA
LNAV MDA	1740-1	521 (600-1)	1740-1 1/2 521 (600-1 1/2)	NA
CIRCLING	1740-1	520 (600-1)	1820-1 1/2 600 (700-1 1/2)	NA

REIL Rwy 5 and 23 0
MIRL Rwy 5-23 0

SE-4, 16 APR 2026 to 14 MAY 2026

SE-4, 16 APR 2026 to 14 MAY 2026