

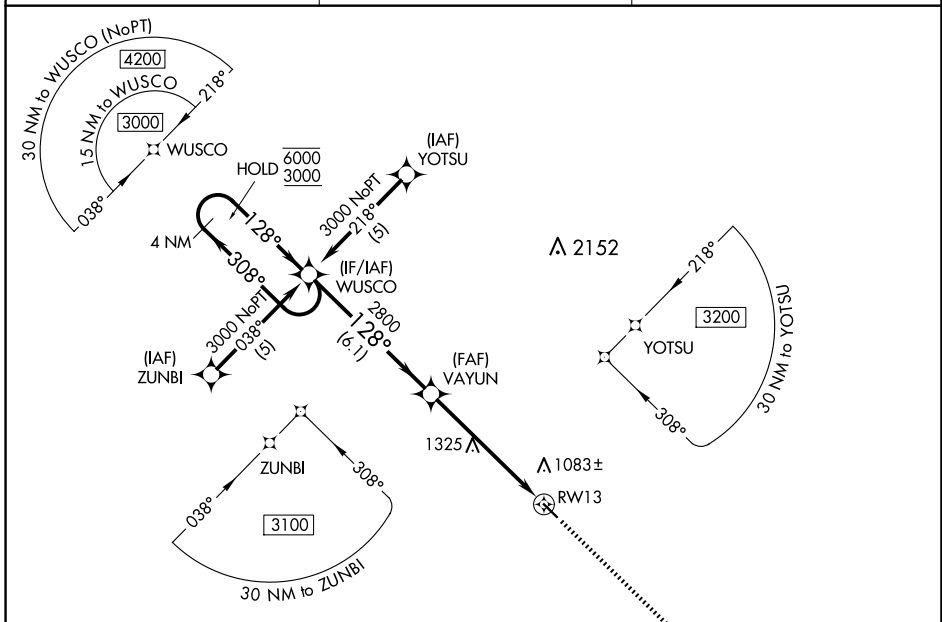
APP CRS	Rwy Idg	<b>3901</b>
<b>128°</b>	TDZE	<b>933</b>
	Apt Elev	<b>933</b>

# RNAV (GPS) RWY 13

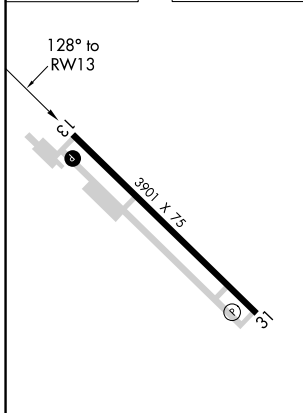
CASSELTON ROBERT MILLER RGNL (5N8)

RNP APCH.	MISSED APPROACH: Climb to 3000 direct JINPU and hold.
<p><b>NA</b> Rwy 13 helicopter visibility reduction below 3/4 SM NA. Use Fargo altimeter setting; when not received use Morehead altimeter setting and increase all MDA 20 feet.</p>	

FAR ASOS <b>124.5 379.2</b>	FARGO APP CON <b>120.4 377.15</b>	UNICOM <b>122.8 (CTAF) 1</b>
--------------------------------	--------------------------------------	---------------------------------



ELEV 933	TDZE 933
----------	----------



REIL Rwy 31 1	MIRL Rwy 13-31 1
---------------	------------------

4 NM Holding Pattern				VGS1 and descent angles not coincident (VGS1 Angle 3.00/TCH 21).		3000	JINPU
6000 ← 308°				→ 128°		↑	✧
3000				2800			
6.1 NM				5.7 NM			
CATEGORY	A	B	C	D			
LNAV MDA	1620-1	687 (700-1)	1620-2 687 (700-2)	NA			

NC-1, 16 APR 2026 to 14 MAY 2026

NC-1, 16 APR 2026 to 14 MAY 2026