

| | | | |
|--|------------------------|-----------------------------|---|
| WAAS CH 70436 W03A | APP CRS 038° | Rwy Ldg TDZE Apt Elev | 6001 3976 3979 |
|--|------------------------|-----------------------------|---|

RNAV (GPS) RWY 3

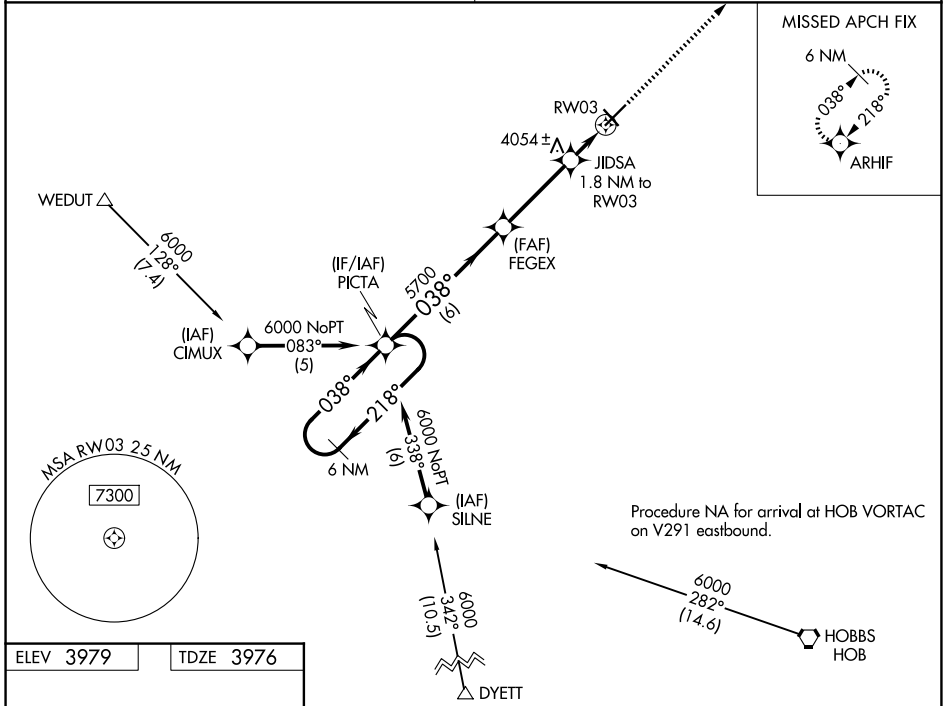
LEA COUNTY/ZIP FRANKLIN MEML (E06)

Baro-VNAV NA. DME/DME RNP-0.3 NA. Use Hobbs altimeter setting; when not received, procedure NA. Helicopter visibility reduction below 1 SM NA. Night landing: Rwy 3, 12, 30 NA.

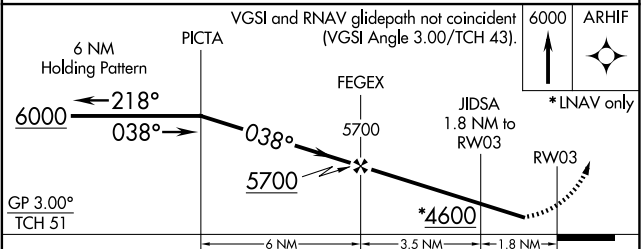
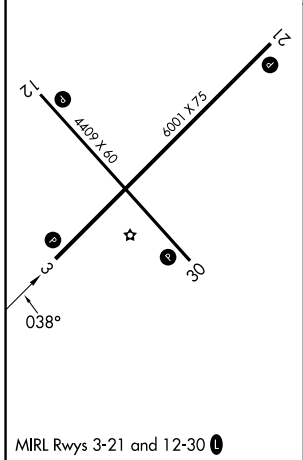
MISSED APPROACH: Climb to 6000 direct ARHIF and hold.

FORT WORTH CENTER 133.1 298.95

UNICOM 122.8 (CTAF) 0



| | |
|-----------|-----------|
| ELEV 3979 | TDZE 3976 |
|-----------|-----------|



| CATEGORY | A | B | C | D |
|--------------|---------|--------------|-------------------------|----|
| LPV DA | 4314-1½ | 338 (400-1½) | | NA |
| LNAV/VNAV DA | 4314-1½ | 338 (400-1½) | | NA |
| LNAV MDA | 4400-1 | 424 (500-1) | 4400-1¼ 424 (500-1¼) | NA |
| CIRCLING | 4480-1 | 501 (600-1) | 4720-2¼ 741 (800-2¼) | NA |

SW-1, 16 APR 2026 to 14 MAY 2026

SW-1, 16 APR 2026 to 14 MAY 2026