

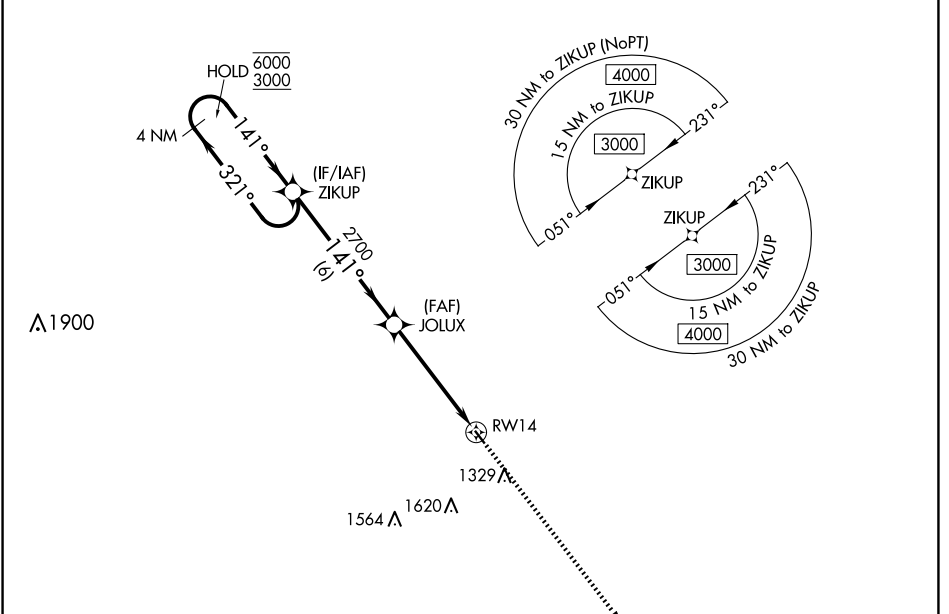
APP CRS	Rwy Idg	<b>2827</b>
<b>141°</b>	TDZE	<b>1116</b>
	Apt Elev	<b>1116</b>

# RNAV (GPS) RWY 14

WINTERSET MUNI (3Y3)

RNP APCH.	<p><b>⚠</b> Circling NA for Cat B southwest of Rwy 14-32. Procedure NA at night.</p> <p><b>⚠</b> Rwy 14 helicopter visibility reduction below 1 SM NA. Use Osceola altimeter setting.</p>	MISSED APPROACH: Climb to 3000 direct JUNUG and hold.
-----------	---	---

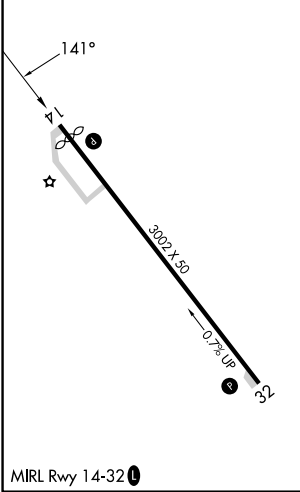
I75 AWOS-3 <b>120.975</b>	DES MOINES APP CON <b>123.9 360.7</b>	UNICOM <b>122.7 (CTAF) 0</b>
------------------------------	--	---------------------------------



NC-3, 16 APR 2026 to 14 MAY 2026

NC-3, 16 APR 2026 to 14 MAY 2026

ELEV 1116	TDZE 1116
-----------	-----------



VGSI and descent angles not coincident (VGSI Angle 3.00/TCH 32).

4 NM Holding Pattern

ZIKUP

JOLUX

RWY 14

3000 JUNUG

6000 ← 321°

3000 → 141°

141°

2700

3.00% TCH 40

6 NM

4.9 NM

CATEGORY	A	B	C	D
LNAV MDA	1640-1	524 (600-1)	NA	
<b>C</b> CIRCLING	1640-1 524 (600-1)	1700-1 584 (600-1)	NA	