

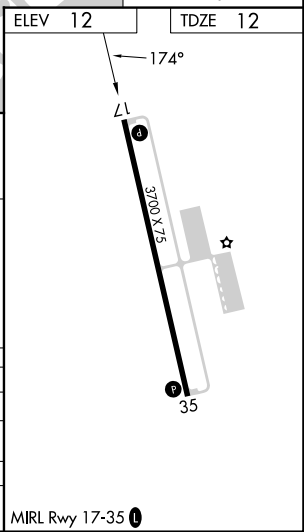
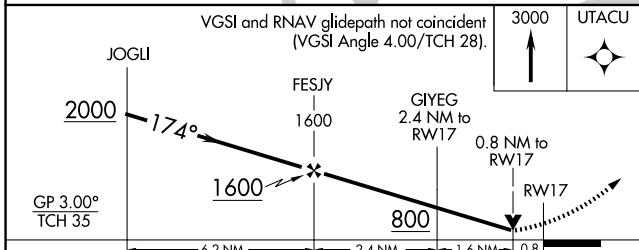
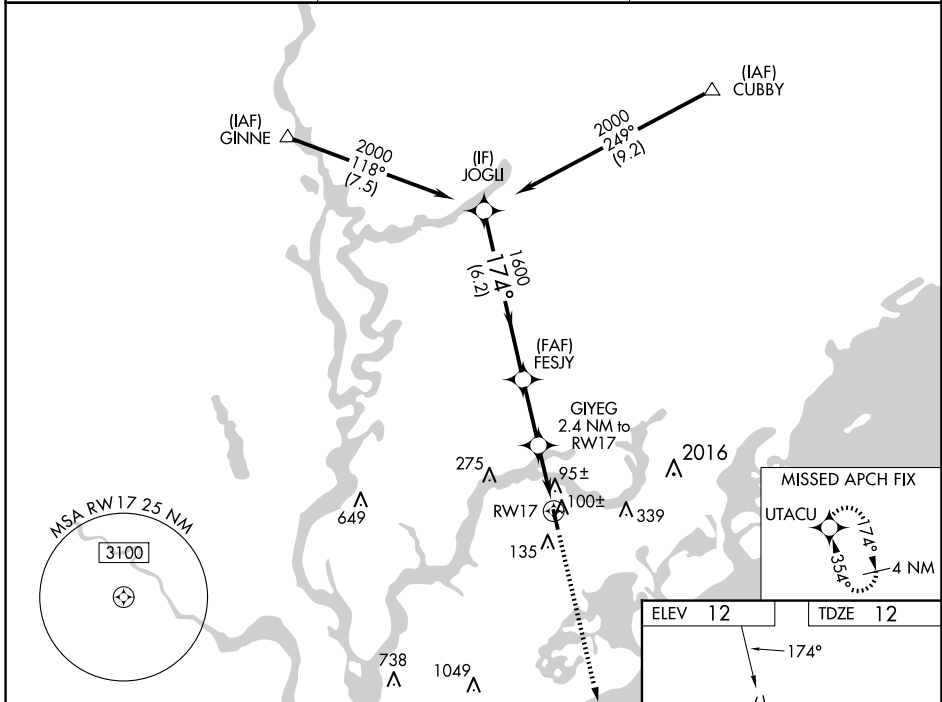
WAAS CH <b>62817</b> <b>W17A</b>	APP CRS <b>174°</b>	Rwy Ldg <b>3700</b> TDZE <b>12</b> Apt Elev <b>12</b>
--	------------------------	---

# RNAV (GPS) RWY 17

MT PLEASANT RGNL-FAISON FLD (L.R.O)

RNP APCH - GPS.		MISSED APPROACH: Climb to 3000 direct UTACU and hold, continue climb-in-hold to 3000.
<p><b>⚠</b> For uncompensated Baro-VNAV systems, LNAV/VNAV NA below -15°C or above 54°C. Rwy 17 helicopter visibility reduction below 3/4 SM NA.</p>		

AWOS-3 <b>118.625</b>	CHARLESTON APP CON <b>121.275 379.925</b>	UNICOM <b>122.7 (CTAF) 0</b>
--------------------------	--	---------------------------------



CATEGORY	A	B	C	D
LPV DA	307-1	295 (300-1)		NA
LNAV/VNAV DA	389-1 1/4	377 (400-1 1/4)		NA
LNAV MDA	360-1	348 (400-1)		NA
CIRCLING	460-1	520-1	700-2	NA
	448 (500-1)	508 (600-1)	688 (700-2)	

SE-2, 16 APR 2026 to 14 MAY 2026

SE-2, 16 APR 2026 to 14 MAY 2026