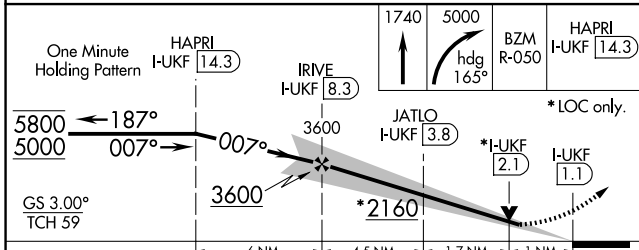
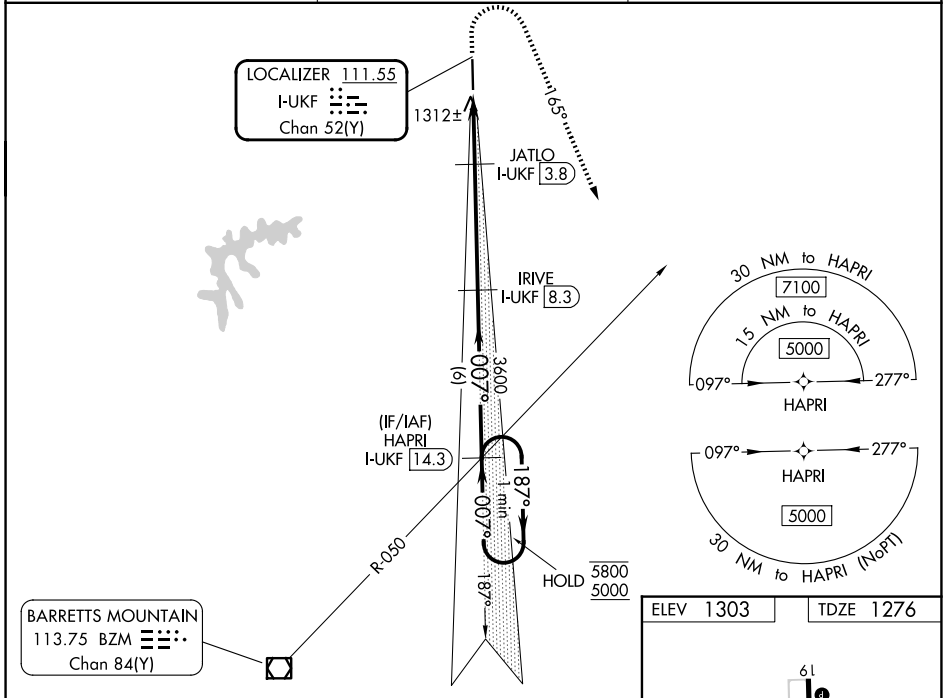


LOC/DME I-UKF <b>111.55</b> Chan 52(Y)	APP CRS <b>007°</b>	Rwy Ldg 6201	TDZE 1276
		Apt Elev 1303	

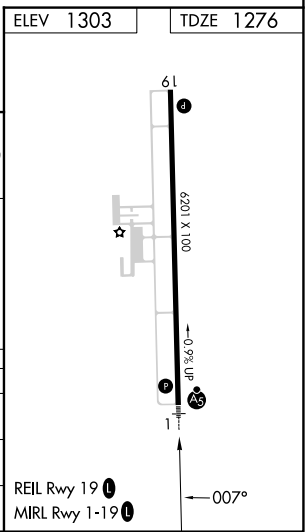
# ILS Z or LOC Z RWY 1

WILKES COUNTY (UKF)

DME required. RNAV 1-GPS required.		MALS R	MISSED APPROACH: Climb to 1740 then climbing right turn to 5000 heading 165° and BZM VOR/DME R-050 direct HAPRI/ I-UKF 14.3 DME and hold, continue climb-in-hold to 5000.
AWOS-3 <b>126,625</b>		ATLANTA CENTER <b>125.15 263.0</b>	UNICOM <b>122.7 (CTAF)</b>



CATEGORY	A	B	C	D
S-ILS 1	1476-1/2		200 (200-1/2)	
S-LOC 1	1640-1/2	364 (400-1/2)	1640-5/8	364 (400-5/8)
CIRCLING	1800-1 497 (500-1)	1880-1 577 (600-1)	1880-1 1/2 577 (600-1 1/2)	2240-3 937 (1000-3)



SE-2, 16 APR 2026 to 14 MAY 2026

SE-2, 16 APR 2026 to 14 MAY 2026