

WAAS CH 99740 W19A	APP CRS 187°	Rwy Ldg TDZE Apt Elev	6201 1303 1303
----------------------------------------	------------------------	-----------------------------	-------------------------------------------

RNAV (GPS) RWY 19

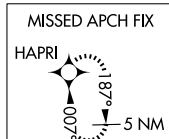
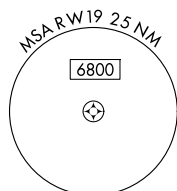
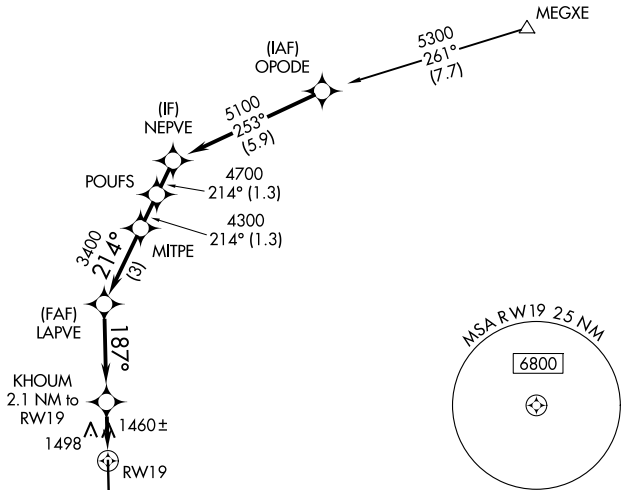
WILKES COUNTY (UKF)

⚠ DME/DME RNP-0.3 NA. VDP NA when using Hickory altimeter setting. When local altimeter setting not received, use Hickory altimeter setting and increase all MDAs 100 feet and LP and LNAV visibility Cats C/D ¼ SM and increase Circling visibility Cat C ½ SM. Rwy 19 helicopter visibility reduction below ¾ SM NA.

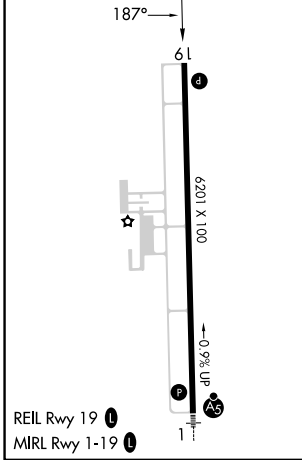
MISSED APPROACH: Climb to 5000 direct HAPRI and hold, continue climb-in-hold to 5000.

AWOS-3 126.625	ATLANTA CENTER 125.15 263.0	UNICOM 122.7 (CTAF) 0
--------------------------	---------------------------------------	---------------------------------

Procedure NA for arrival at MEGXE on V37 northbound.



ELEV 1303	TDZE 1303
-----------	-----------



5000 HAPRI	VGSI and descent angles not coincident (VGSI Angle 3.00/TCH 47).			
	KHOUM 2.1 NM to RW19	LAPVE ≤ 3.45° TCH 47	MITPE	POUFS NEPVE
	1.2 NM to RW19	3400	4300	4700 5100
	187°	214°		
	1.2	0.9	3.5 NM	3 NM
			1.3 NM	1.3 NM
CATEGORY	A	B	C	D
LP MDA	1720-1	417 (500-1)	1720-1½	417 (500-1½)
LNAV MDA	1760-1	457 (500-1)	1760-1¾	457 (500-1¾)
CIRCLING	1800-1 497 (500-1)	1880-1 577 (600-1)	1880-1½ 577 (600-1½)	2240-3 937 (1000-3)

SE-2, 16 APR 2026 to 14 MAY 2026

SE-2, 16 APR 2026 to 14 MAY 2026