

WAAS CH <b>86238</b> <b>W05A</b>	APP CRS <b>049°</b>	Rwy Ldg TDZE Apt Elev	<b>5001</b> <b>85</b> <b>90</b>
--	------------------------	-----------------------------	---------------------------------------

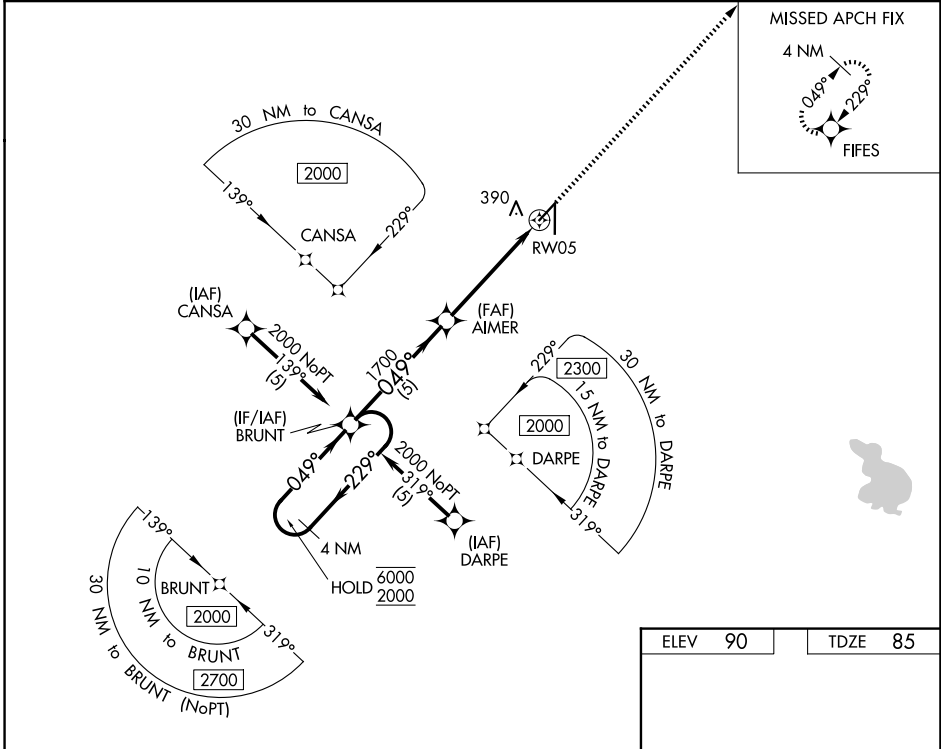
# RNAV (GPS) RWY 5

ZEPHYRHILLS MUNI (ZPH)

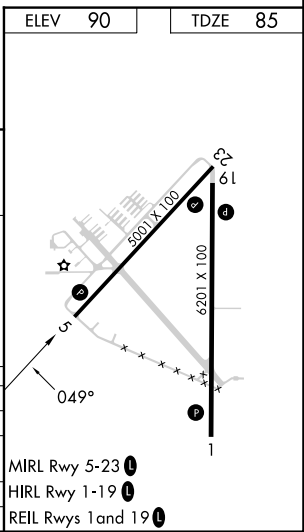
RNP APCH.

**MISSED APPROACH:** Climb to 2000 direct FIFES and hold.

AWOS-3PT <b>118.975</b>	TAMPA APP CON <b>119.9 290.3</b>	UNICOM <b>123.075 (CTAF) 0</b>
----------------------------	-------------------------------------	-----------------------------------



4 NM Holding Pattern	VGSI and RNAV glidepath not coincident (VGSI Angle 3.63/TCH 41).		2000	FIFES
6000 ← 229°	BRUNT	AIMER	*LNNAV only.	
2000 → 049°		1700	*1.2 NM to RWY 5	
GP 3.00°			RWY 5	
TCH 55				
	5 NM	3.7 NM	1.2 NM	
CATEGORY	A	B	C	D
LPV DA	373-1	288 (300-1)		NA
LNNAV/VNAV DA	582-1½	497 (500-1½)		NA
LNNAV MDA	600-1	515 (600-1)		NA
CIRCLING	740-1	650 (700-1)		NA



SE-3, 16 APR 2026 to 14 MAY 2026

SE-3, 16 APR 2026 to 14 MAY 2026