

WAAS CH <b>57934</b> <b>W25A</b>	APP CRS <b>246°</b>	Rwy Ldg TDZE Apt Elev	<b>3632</b> <b>1072</b> <b>1072</b>
--	------------------------	-----------------------------	---

# RNAV (GPS) RWY 25

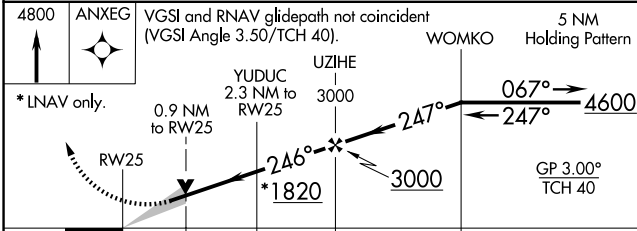
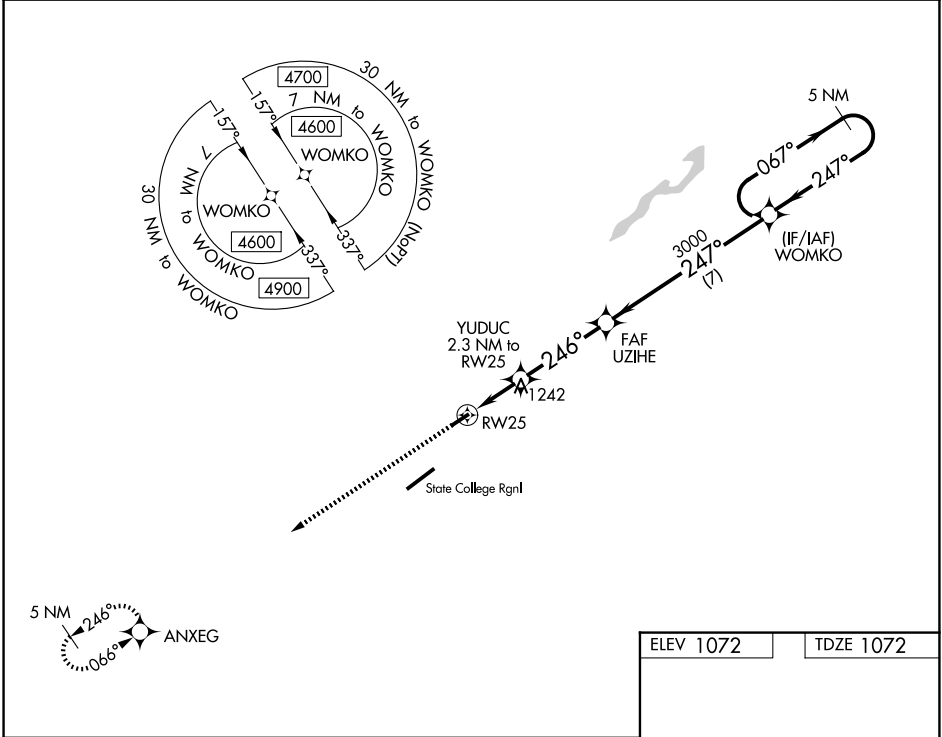
BELLEFONTE (N96)

RNP APCH - GPS.

**NA** Baro-VNAV NA. VDP NA with Clearfield altimeter setting. Use State College altimeter setting, when not received use Clearfield altimeter setting and increase all DA 129 feet and all MDA 140 feet. Increase LPV and LNAV/VNAV all Cats visibility 1/2 mile. Circling NA southeast of Rwy 7-25. Procedure NA at night.

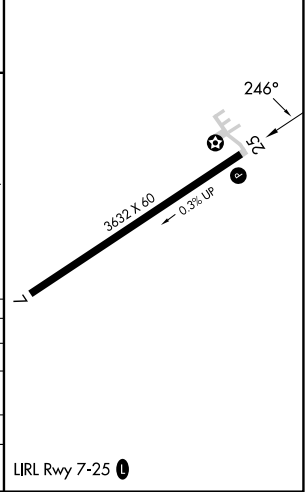
**MISSED APPROACH:** Climb to 4800 direct ANXEG and hold, continue climb-in-hold 4800.

UNV AWOS-3 <b>127.65</b>	NEW YORK CENTER <b>134.8 338.3</b>	CLNC DEL <b>125.725</b>	CLNC DEL <b>118.55</b> (When hwr closed)	UNICOM <b>122.8</b> (CTAF)	<b>122.7</b> <b>0</b>
-----------------------------	---------------------------------------	----------------------------	--	-------------------------------	-----------------------



ELEV 1072	TDZE 1072
-----------	-----------

CATEGORY	A	B	C	D
LPV DA	1367-1	295 (300-1)		NA
LNAV/VNAV DA	1701-2¼	629 (700-2¼)		NA
LNAV MDA	1600-1	528 (500-1)		NA
CIRCLING	2140-1¼ 1068 (1100-1¼)	2380-1½ 1308 (1400-1½)		NA



LIRL Rwy 7-25 **0**

# RNAV (GPS) RWY 25

BELLEFONTE (N96)

NE-4, 16 APR 2026 to 14 MAY 2026

NE-4, 16 APR 2026 to 14 MAY 2026